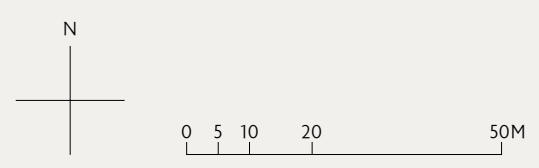
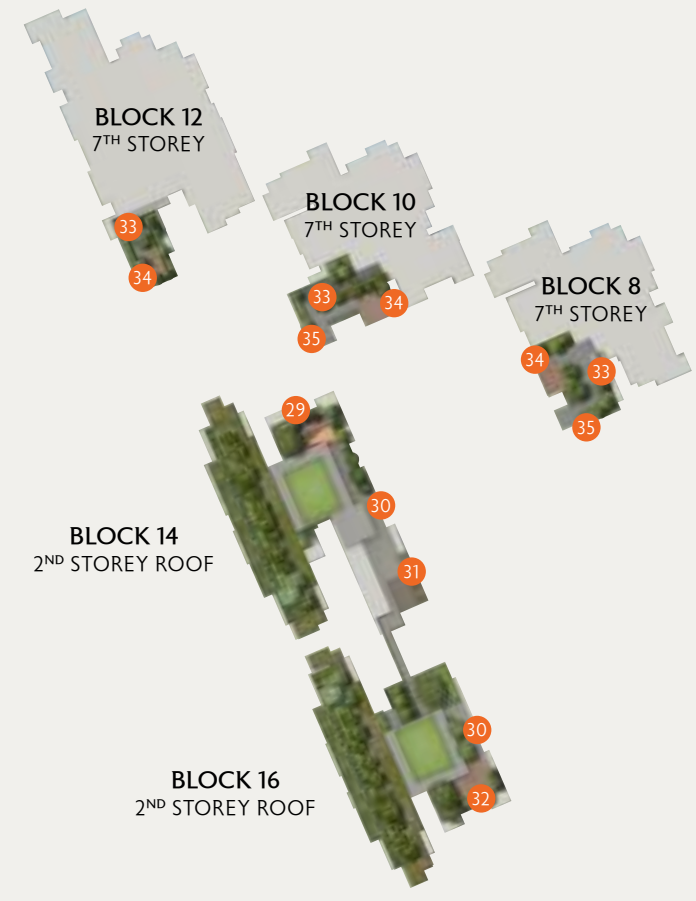


Site Plan



Artist's Impression



Artist's Impression

ROOF GARDENS

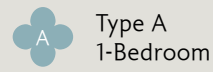
- 2ND STOREY ROOF
 - 29 Outdoor Fitness
 - 30 Viewing Deck
 - 31 Reading Pods
 - 32 Sky Patio
- 7TH STOREY
 - 33 Themed Garden
 - 34 Sky Pavilion
 - 35 Seating Pod

FACILITIES

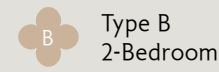
- 1 Drop Off (Arrival Plaza)
- 2 Meditation Pavilion
- 3 Aromatic Garden
- 4 Cloud Pond
- 5 Resting Pavilion
- 6 Clubhouse
- 7 Pool Deck
- 8 Aqua Deck
- 9 50m Lap Pool
- 10 Jacuzzi Pod
- 11 Leisure Pavilion
- 12 Kids' Pool
- 13 Outdoor Shower
- 14 Relaxation Pavilion
- 15 Grand Lawn
- 16 Water Court
- 17 Garden Alcove
- 18 Floating Garden
- 19 Bosque Garden
- 20 Socializing Pavilion
- 21 Playground
- 22 BBQ Pavilion
- 23 Grand Boulevard
- 24 Tennis Court
- 25 Service Gate
- 26 Pedestrian Gate 1
- 27 Pedestrian Gate 2
- 28 Gate 3 / Fire Engine Access

OTHERS

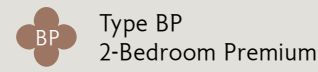
- GH Guard House
- BC Bin Centre
- PT Powergrid Transformer Room (Sub-station)
- PS Powergrid Switchgear Room (Sub-station)
- VS Ventilation Shaft
- BM Bulk Meter
- Water Tank
- Hose Reel Tank



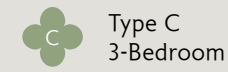
Type A
1-Bedroom



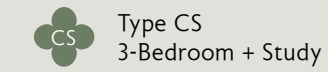
Type B
2-Bedroom



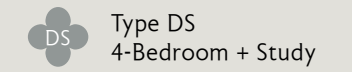
Type BP
2-Bedroom Premium



Type C
3-Bedroom



Type CS
3-Bedroom + Study



Type DS
4-Bedroom + Study

2

UNIT FLOOR	01	02	03	04	05	06
06	BP1b	C2(h)	C2(h)	BP4	DS3(h)	CS6(h)
05	BP1b	C2	C2	BP4	DS3	CS6
04	BP1b	C2	C2	BP4	DS3	CS6
03	BP1b	C2	C2	BP4	DS3	CS6
02	BP1b	C2	C2	BP4	DS3	CS6
01	BP1b(p)	C2(p)	C2(p)	BP4(p)	DS3(p)	CS6(p)

4

UNIT FLOOR	07	08	09	10	11	12
06	CS3(h)	DS3(h)	BP4	C2(h)	C2	BP1b
05	CS3	DS3	BP4	C2	C2	BP1b
04	CS3	DS3	BP4	C2	C2	BP1b
03	CS3	DS3	BP4	C2	C2	BP1b
02	CS3	DS3	BP4	C2	C2	BP1b
01	CS3(p)	DS3(p)	BP4(p)	C2(p)	C2(p)	BP1b(p)

12

UNIT FLOOR	35	36	37	38	39	40	41	42	43	44	45
10	A1a	A1b	CS7	A4	BP3a	A1c	A1c	BP6	–	A1b	A1a
09	A1a	A1b	CS7	A4	BP3a	A1c	A1c	BP6	–	A1b	A1a
08	A1a	A1b	CS7	A4	BP3a	A1c	A1c	BP6	–	A1b	A1a
07	A1a	A1b	CS7	A4	BP3a	A1c	A1c	BP6	–	A1b	A1a
06	A1a	A1b	CS7	A4	BP3a	A1c	A1c	BP6	C6	A1b	A1a
05	A1a	A1b	CS7	A4	BP3a	A1c	A1c	BP6	C6	A1b	A1a
04	A1a	A1b	CS7	A4	BP3a	A1c	A1c	BP6	C6	A1b	A1a
03	A1a	A1b	CS7	A4	BP3a	A1c	A1c	BP6	C6	A1b	A1a
02	A1a	A1b	CS7	A4	BP3a	A1c	A1c	BP6	C6	A1b	A1a
01	A1a(p)	A1b(p)	CS7(p)	A4	BP3a(p)	–	A1c(p)	BP6(p)	C6(p)	A1b(p)	A1a(p)

6

UNIT FLOOR	13	14	15	16	17	18	19	20	21	22
10	A1a	B3	A3	A1c	BP3a	A2	BP5	CS5	A1b	A1a
09	A1a	B3	A3	A1c	BP3a	A2	BP5	CS5	A1b	A1a
08	A1a	B3	A3	A1c	BP3a	A2	BP5	CS5	A1b	A1a
07	A1a	B3	A3	A1c	BP3a	A2	BP5	CS5	A1b	A1a
06	A1a	B3	A3	A1c	BP3a	A2	BP5	CS5	A1b	A1a
05	A1a	B3	A3	A1c	BP3a	A2	BP5	CS5	A1b	A1a
04	A1a	B3	A3	A1c	BP3a	A2	BP5	CS5	A1b	A1a
03	A1a	B3	A3	A1c	BP3a	A2	BP5	CS5	A1b	A1a
02	A1a	B3	A3	A1c	BP3a	A2	BP5	CS5	A1b	A1a
01	A1a(p)	B3(p)	A3(p)	–	BP3a(p)	A2(p)	BP5(p)	CS5(p)	A1b(p)	A1a(p)

14

UNIT FLOOR	46	47	48	49	50	51	52
02	A1a	C4	CS2	BP1c	C3	A1a	A1a
01	A1a(p)	C4(p)	CS2(p)	BP1c(p)	C3(p)	A1a(p)	A1a(p)

16

UNIT FLOOR	53	54	55	56	57	58	59	60
02	A1a	A1a	C3	B2b	BP1c	CS2	C4	A1a
01	A1a(p)	A1a(p)	C3(p)	B2b(p)	BP1c(p)	CS2(p)	C4(p)	A1a(p)

8

UNIT FLOOR	23	24	25	26	27	28
10	CS1	–	BP3b	C1	B2a	BP1a
09	CS1	–	BP3b	C1	B2a	BP1a
08	CS1	–	BP3b	C1	B2a	BP1a
07	CS1	–	BP3b	C1	B2a	BP1a
06	CS1	DS1	BP3b	C1	B2a	BP1a
05	CS1	DS1	BP3b	C1	B2a	BP1a
04	CS1	DS1	BP3b	C1	B2a	BP1a
03	CS1	DS1	BP3b	C1	B2a	BP1a
02	CS1	DS1	BP3b	C1	B2a	BP1a
01	CS1(p)	DS1(p)	–	C1(p)	B2a(p)	BP1a(p)

10

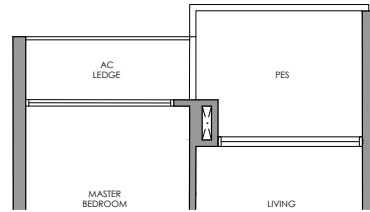
UNIT FLOOR	29	30	31	32	33	34
10	CS2	–	BP3b	C1	B2a	BP1a
09	CS2	–	BP3b	C1	B2a	BP1a
08	CS2	–	BP3b	C1	B2a	BP1a
07	CS2	–	BP3b	C1	B2a	BP1a
06	CS2	DS2	BP3b	C1	B2a	BP1a
05	CS2	DS2	BP3b	C1	B2a	BP1a
04	CS2	DS2	BP3b	C1	B2a	BP1a
03	CS2	DS2	BP3b	C1	B2a	BP1a
02	CS2	DS2	BP3b	C1	B2a	BP1a
01	CS2(p)	DS2(p)	–	C1(p)	B2a(p)	BP1a(p)

18

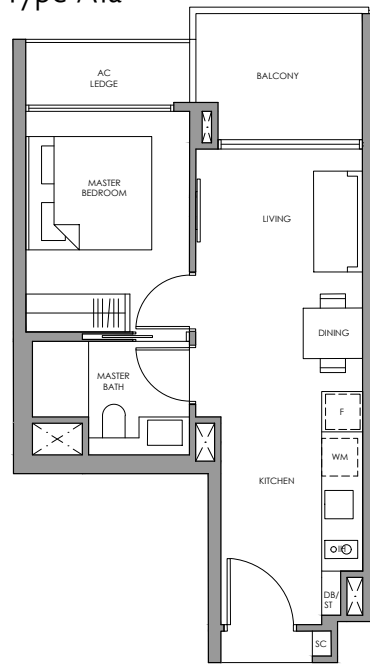
UNIT FLOOR	61	62	63	64	65	66	67	68	69	70
06	BP1b	A1d	CS4a(h)	CS4b(h)	B1	A1c	A1c	BP2	C5(h)	A1d
05	BP1b	A1d	CS4a	CS4b	B1	A1c	A1c	BP2	C5	A1d
04	BP1b	A1d	CS4a	CS4b	B1	A1c	A1c	BP2	C5	A1d
03	BP1b	A1d	CS4a	CS4b	B1	A1c	A1c	BP2	C5	A1d
02	BP1b	A1d	CS4a	CS4b	B1	A1c	A1c	BP2	C5	A1d
01	BP1b(p)	A1d(p)	CS4a(p)	CS4b(p)	B1(p)	A1c(p)	A1c(p)	BP2(p)	C5(p)	A1d(p)

1-Bedroom

Type A1a(p)



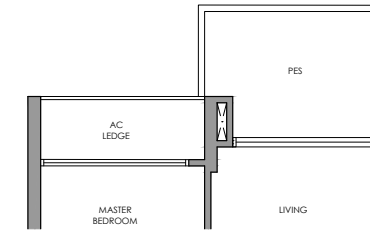
Type A1a



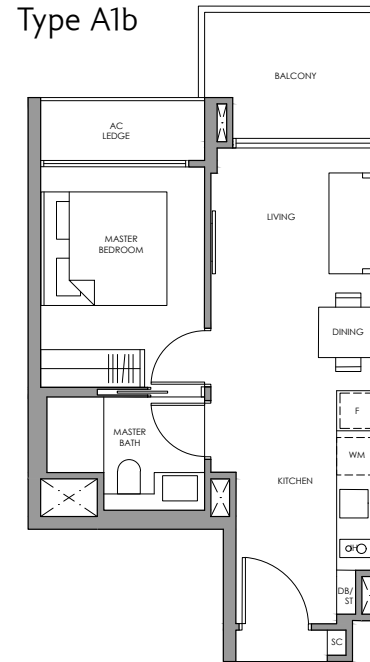
Fridge F
 Induction Hob IH
 Shoe Cabinet SC
 Washer cum Dryer WM
 Distribution Board / Store DB/ST

1-Bedroom

Type A1b(p)



Type A1b

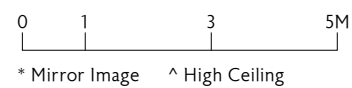


Fridge F
 Induction Hob IH
 Shoe Cabinet SC
 Washer cum Dryer WM
 Distribution Board / Store DB/ST

✦ Type A1a(p)

45 sq m / 484 sq ft
 Inclusive of 6 sq m PES
 & 3 sq m AC Ledge

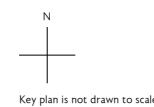
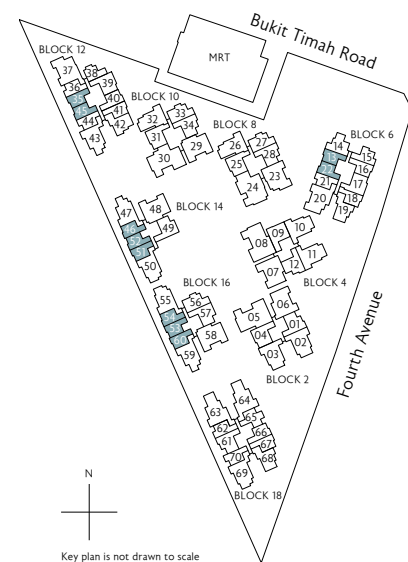
- | | |
|--------------------------------|--|
| Block 6
#01-13
#01-22 * | Block 14
#01-46 *
#01-51
#01-52 * |
| Block 12
#01-35
#01-45 * | Block 16
#01-53
#01-54 *
#01-60 |



✦ Type A1a

45 sq m / 484 sq ft
 Inclusive of 6 sq m Balcony
 & 3 sq m AC Ledge

- | | |
|--|--|
| Block 6
#02-13 to #10-13
#02-22 to #10-22 * | Block 14
#02-46 * ^
#02-51 ^
#02-52 * ^ |
| Block 12
#02-35 to #10-35
#02-45 to #10-45 * | Block 16
#02-53 ^
#02-54 * ^
#02-60 ^ |

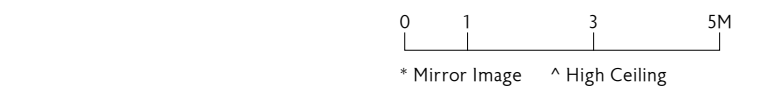


All plans are subject to change as may be required or approved by the relevant authorities. All floor areas are approximate measurements only and are subject to final survey. The balcony shall not be enclosed except with the approved balcony screen. For an illustration of the approved balcony screen, please refer to the diagram annexed hereto as "Annexure 1"

✦ Type A1b(p)

45 sq m / 484 sq ft
 Inclusive of 6 sq m PES
 & 3 sq m AC Ledge

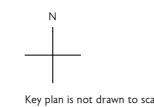
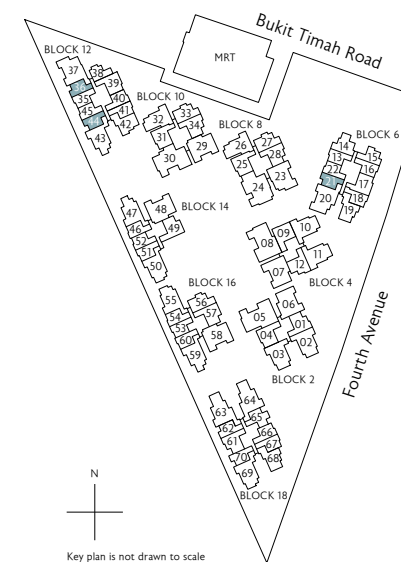
- | |
|--------------------------------|
| Block 6
#01-21 |
| Block 12
#01-36 *
#01-44 |



✦ Type A1b

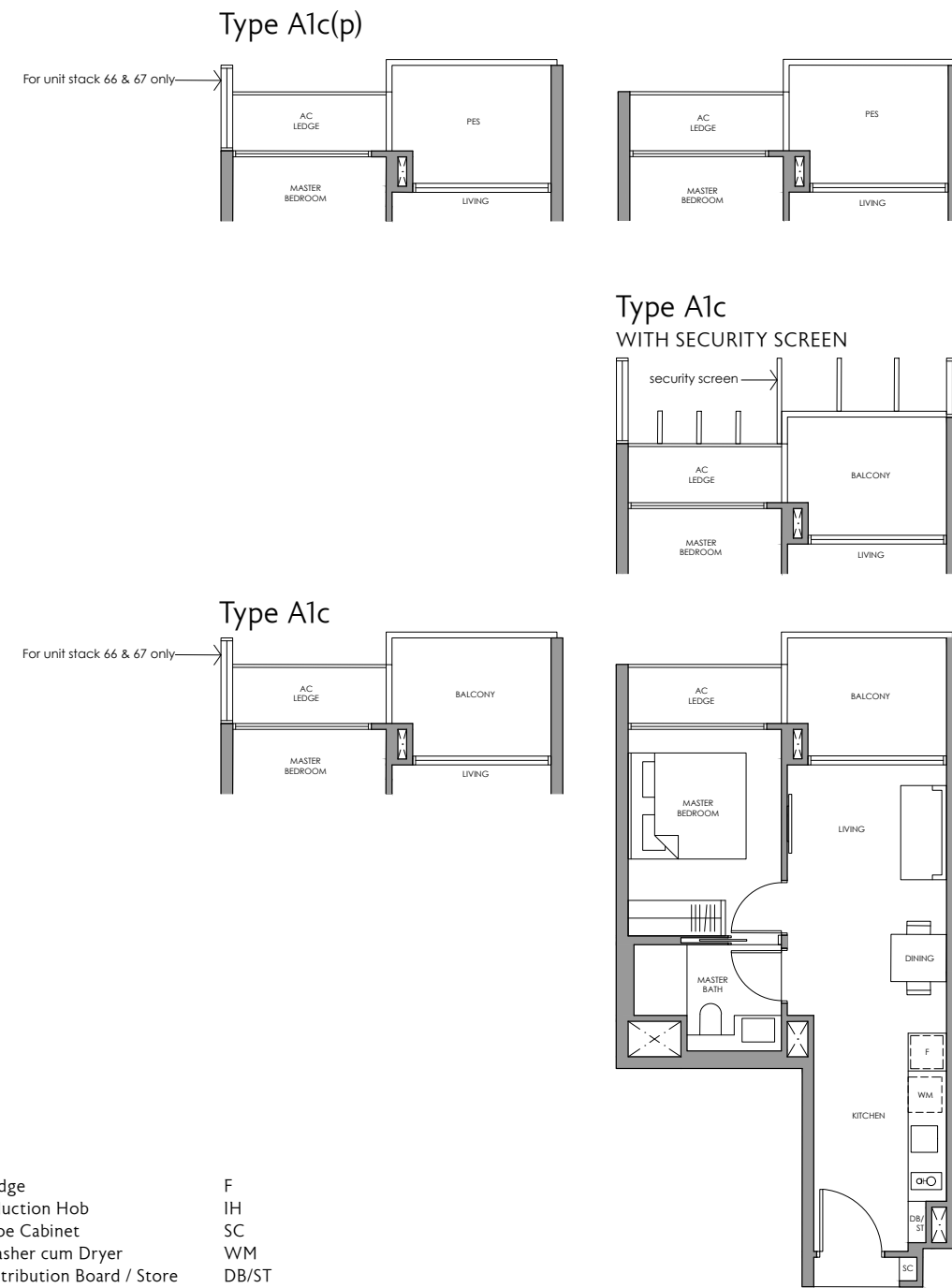
45 sq m / 484 sq ft
 Inclusive of 6 sq m Balcony
 & 3 sq m AC Ledge

- | |
|--|
| Block 6
#02-21 to #10-21 |
| Block 12
#02-36 to #10-36 *
#02-44 to #10-44 |



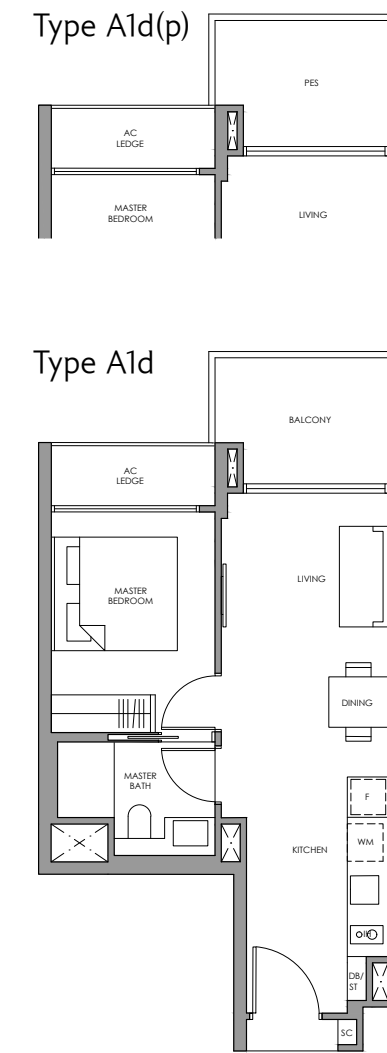
All plans are subject to change as may be required or approved by the relevant authorities. All floor areas are approximate measurements only and are subject to final survey. The balcony shall not be enclosed except with the approved balcony screen. For an illustration of the approved balcony screen, please refer to the diagram annexed hereto as "Annexure 1"

1-Bedroom



Fridge	F
Induction Hob	IH
Shoe Cabinet	SC
Washer cum Dryer	WM
Distribution Board / Store	DB/ST

1-Bedroom



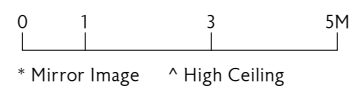
Fridge	F
Induction Hob	IH
Shoe Cabinet	SC
Washer cum Dryer	WM
Distribution Board / Store	DB/ST

Type A1c(p)

47 sq m / 506 sq ft
Inclusive of 6 sq m PES
& 3 sq m AC Ledge

Block 12
#01-41 *

Block 18
#01-66
#01-67 *



* Mirror Image ^ High Ceiling

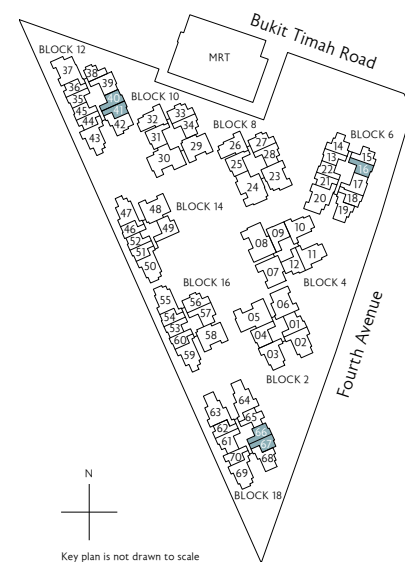
Type A1c

47 sq m / 506 sq ft
Inclusive of 6 sq m Balcony
& 3 sq m AC Ledge

Block 6
#02-16 to #06-16 *
#07-16 to #10-16 * (security screen)

Block 12
#02-40 to #10-40
#02-41 to #10-41 *

Block 18
#02-66 to #06-66
#02-67 to #06-67 *

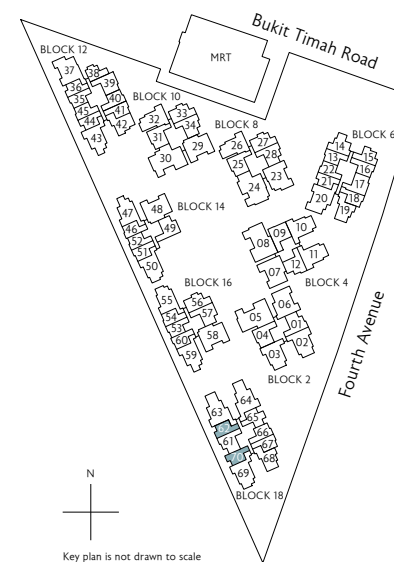


Key plan is not drawn to scale

Type A1d(p)

47 sq m / 506 sq ft
Inclusive of 6 sq m PES
& 3 sq m AC Ledge

Block 18
#01-62 *
#01-70

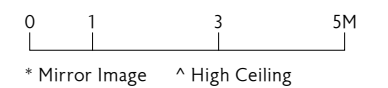


Key plan is not drawn to scale

Type A1d

47 sq m / 506 sq ft
Inclusive of 6 sq m Balcony
& 3 sq m AC Ledge

Block 18
#02-62 to #06-62 *
#02-70 to #06-70



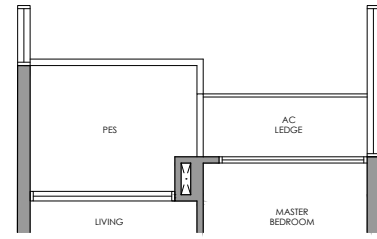
* Mirror Image ^ High Ceiling

All plans are subject to change as may be required or approved by the relevant authorities. All floor areas are approximate measurements only and are subject to final survey. The balcony shall not be enclosed except with the approved balcony screen. For an illustration of the approved balcony screen, please refer to the diagram annexed hereto as "Annexure 1"

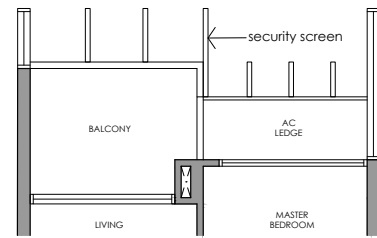
All plans are subject to change as may be required or approved by the relevant authorities. All floor areas are approximate measurements only and are subject to final survey. The balcony shall not be enclosed except with the approved balcony screen. For an illustration of the approved balcony screen, please refer to the diagram annexed hereto as "Annexure 1"

1-Bedroom

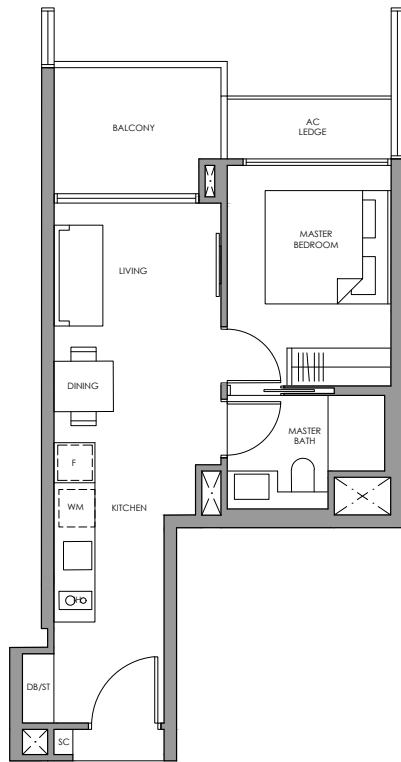
Type A2(p)



Type A2
WITH SECURITY SCREEN



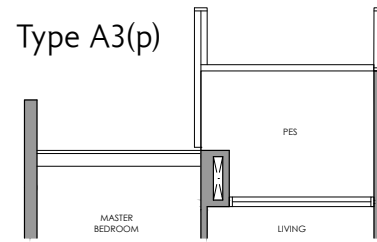
Type A2



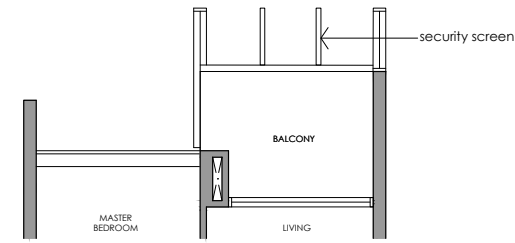
Fridge F
Induction Hob IH
Shoe Cabinet SC
Washer cum Dryer WM
Distribution Board / Store DB/ST

1-Bedroom

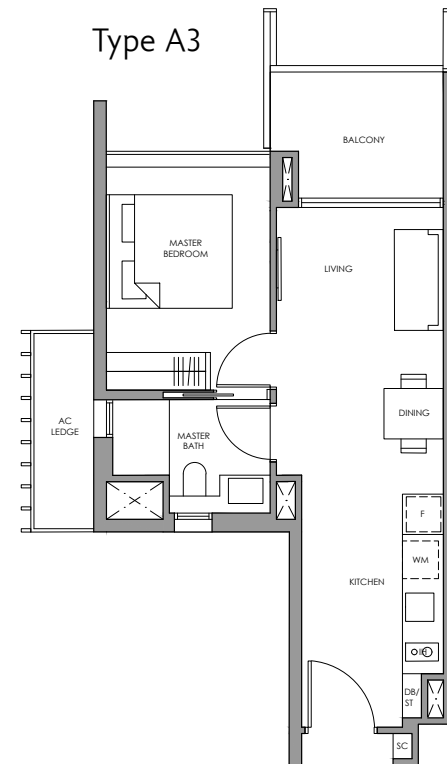
Type A3(p)



Type A3
WITH SECURITY SCREEN



Type A3



Fridge F
Induction Hob IH
Shoe Cabinet SC
Washer cum Dryer WM
Distribution Board / Store DB/ST

✦
Type A2(p)

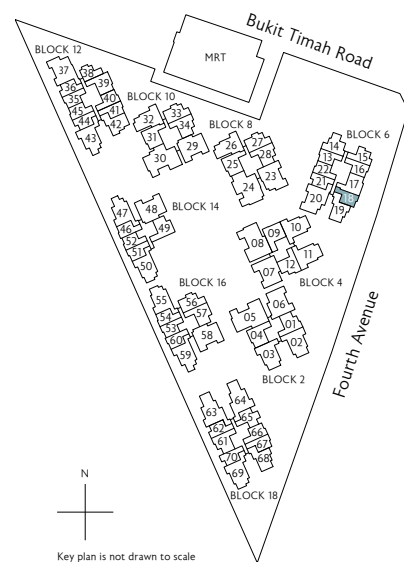
46 sq m / 495 sq ft
Inclusive of 6 sq m PES
& 3 sq m AC Ledge

Block 6
#01-18

✦
Type A2

46 sq m / 495 sq ft
Inclusive of 6 sq m Balcony
& 3 sq m AC Ledge

Block 6
#02-18 to #06-18
#07-18 to #10-18 (security screen)



N
Key plan is not drawn to scale

0 1 3 5M
* Mirror Image ^ High Ceiling

All plans are subject to change as may be required or approved by the relevant authorities. All floor areas are approximate measurements only and are subject to final survey. The balcony shall not be enclosed except with the approved balcony screen. For an illustration of the approved balcony screen, please refer to the diagram annexed hereto as "Annexure 1"

✦
Type A3(p)

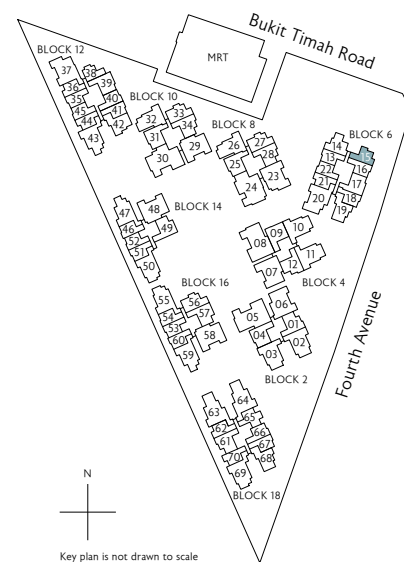
48 sq m / 517 sq ft
Inclusive of 6 sq m PES
& 4 sq m AC Ledge

Block 6
#01-15

✦
Type A3

48 sq m / 517 sq ft
Inclusive of 6 sq m Balcony
& 4 sq m AC Ledge

Block 6
#02-15 to #06-15
#07-15 to #10-15 (security screen)



N
Key plan is not drawn to scale

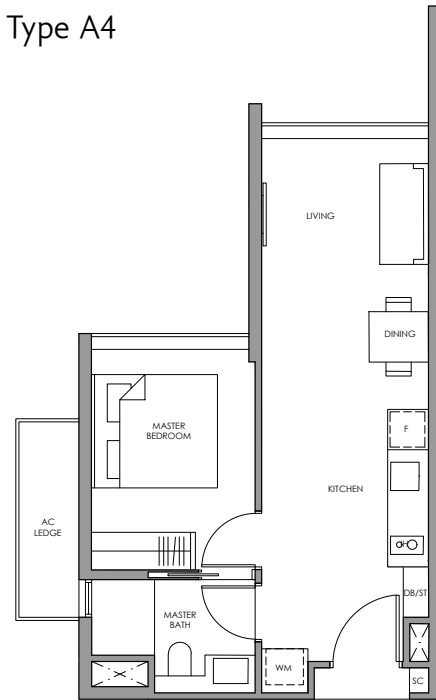
0 1 3 5M
* Mirror Image ^ High Ceiling

All plans are subject to change as may be required or approved by the relevant authorities. All floor areas are approximate measurements only and are subject to final survey. The balcony shall not be enclosed except with the approved balcony screen. For an illustration of the approved balcony screen, please refer to the diagram annexed hereto as "Annexure 1"

1-Bedroom

2-Bedroom

Type A4

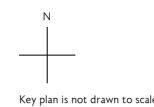
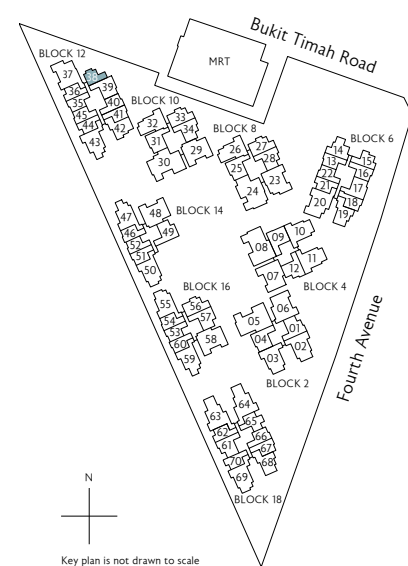
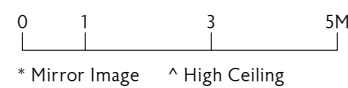


- Fridge F
- Induction Hob IH
- Shoe Cabinet SC
- Washer cum Dryer WM
- Distribution Board / Store DB/ST

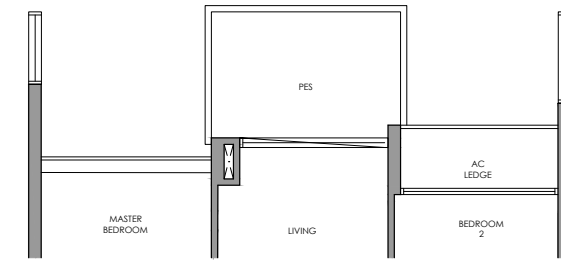
Type A4

44 sq m / 474 sq ft
Inclusive of 4 sq m AC Ledge

Block 12
#01-38 to #10-38

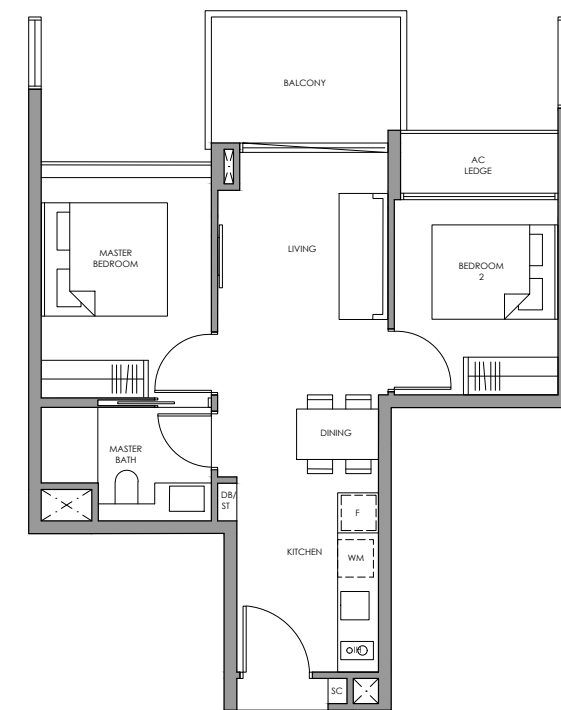


Type B1(p)



- Fridge F
- Induction Hob IH
- Shoe Cabinet SC
- Washer cum Dryer WM
- Distribution Board / Store DB/ST

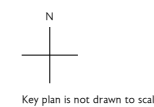
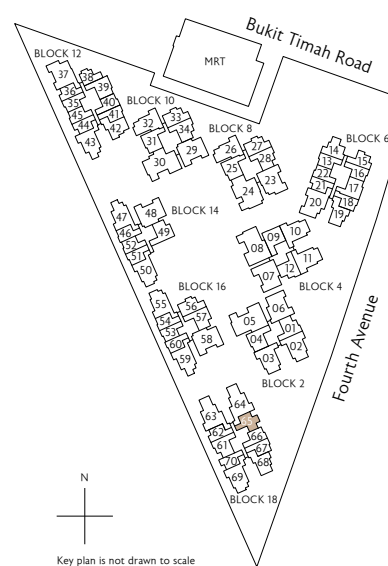
Type B1



Type B1(p)

58 sq m / 624 sq ft
Inclusive of 7 sq m PES
& 3 sq m AC Ledge

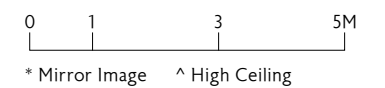
Block 18
#01-65



Type B1

58 sq m / 624 sq ft
Inclusive of 7 sq m Balcony
& 3 sq m AC Ledge

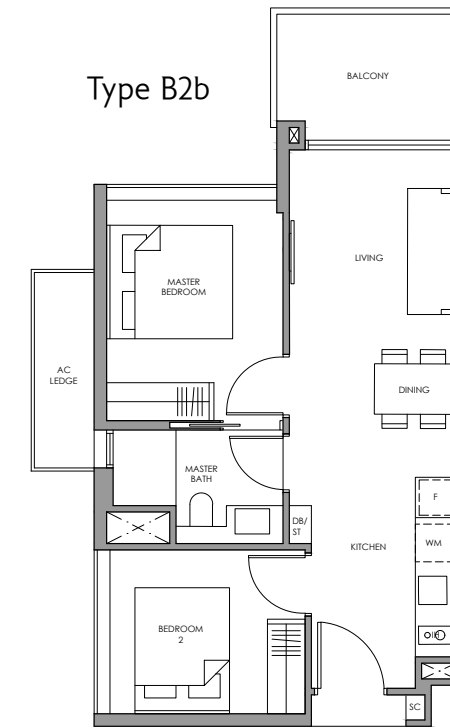
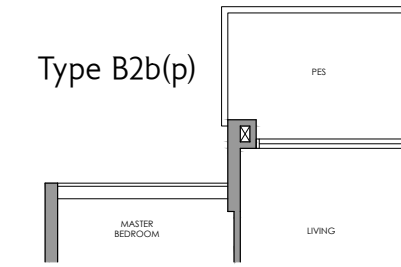
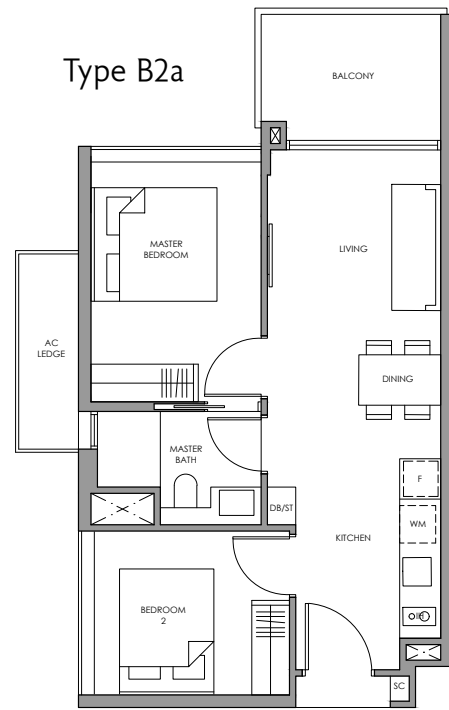
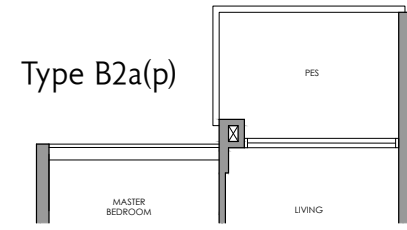
Block 18
#02-65 to #06-65



All plans are subject to change as may be required or approved by the relevant authorities. All floor areas are approximate measurements only and are subject to final survey. The balcony shall not be enclosed except with the approved balcony screen. For an illustration of the approved balcony screen, please refer to the diagram annexed hereto as "Annexure 1"

All plans are subject to change as may be required or approved by the relevant authorities. All floor areas are approximate measurements only and are subject to final survey. The balcony shall not be enclosed except with the approved balcony screen. For an illustration of the approved balcony screen, please refer to the diagram annexed hereto as "Annexure 1"

2-Bedroom



Fridge F
 Induction Hob IH
 Shoe Cabinet SC
 Washer cum Dryer WM
 Distribution Board / Store DB/ST

Fridge F
 Induction Hob IH
 Shoe Cabinet SC
 Washer cum Dryer WM
 Distribution Board / Store DB/ST

✦
Type B2a(p)
 60 sq m / 646 sq ft
 Inclusive of 6 sq m PES
 & 4 sq m AC Ledge

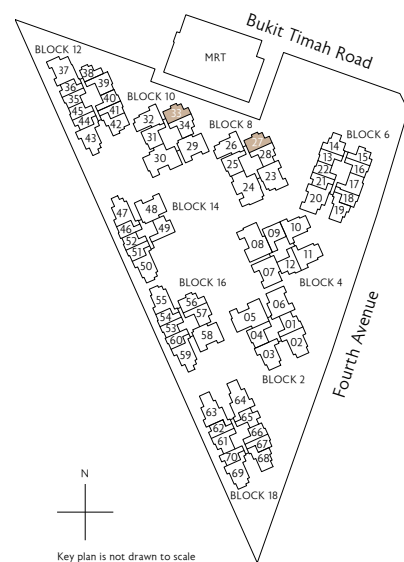
Block 8
 #01-27

Block 10
 #01-33

✦
Type B2a
 60 sq m / 646 sq ft
 Inclusive of 6 sq m Balcony
 & 4 sq m AC Ledge

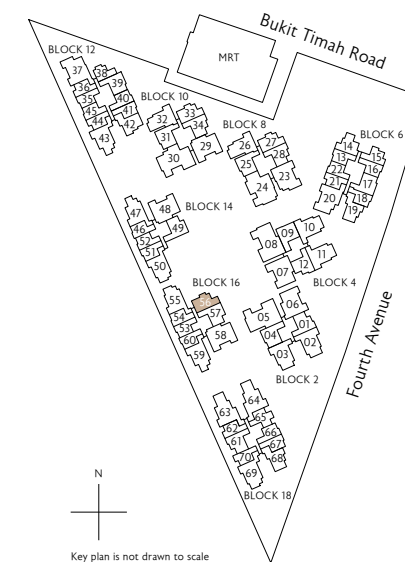
Block 8
 #02-27 to #10-27

Block 10
 #02-33 to #10-33



N
 Key plan is not drawn to scale

0 1 3 5M
 * Mirror Image ^ High Ceiling



N
 Key plan is not drawn to scale

✦
Type B2b(p)
 60 sq m / 646 sq ft
 Inclusive of 6 sq m PES
 & 4 sq m AC Ledge

Block 16
 #01-56

✦
Type B2b
 60 sq m / 646 sq ft
 Inclusive of 6 sq m Balcony
 & 4 sq m AC Ledge

Block 16
 #02-56 ^

0 1 3 5M
 * Mirror Image ^ High Ceiling

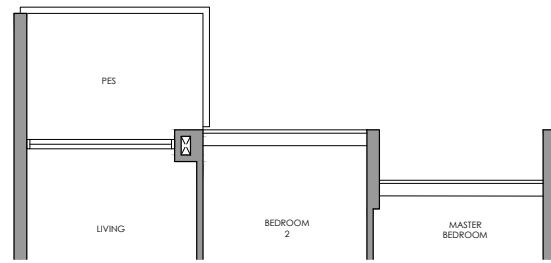
All plans are subject to change as may be required or approved by the relevant authorities. All floor areas are approximate measurements only and are subject to final survey. The balcony shall not be enclosed except with the approved balcony screen. For an illustration of the approved balcony screen, please refer to the diagram annexed hereto as "Annexure 1"

All plans are subject to change as may be required or approved by the relevant authorities. All floor areas are approximate measurements only and are subject to final survey. The balcony shall not be enclosed except with the approved balcony screen. For an illustration of the approved balcony screen, please refer to the diagram annexed hereto as "Annexure 1"

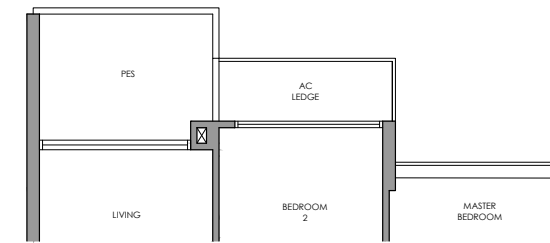
2-Bedroom

2-Bedroom Premium

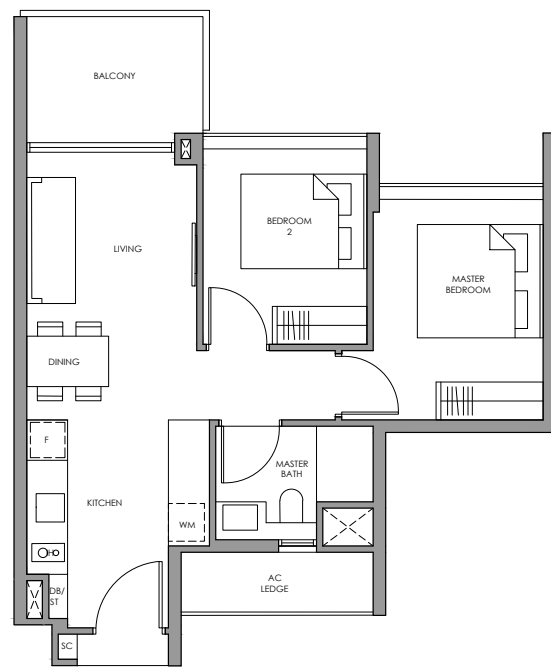
Type B3(p)



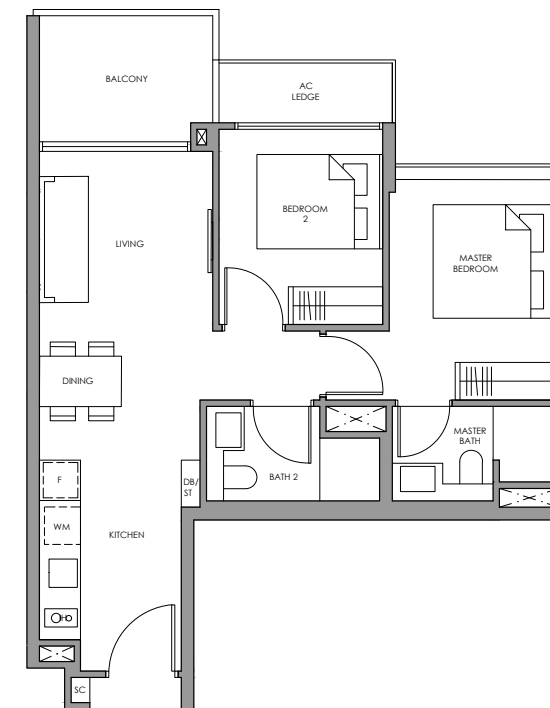
Type BP1a(p)



Type B3



Type BP1a



Fridge F
 Induction Hob IH
 Shoe Cabinet SC
 Washer cum Dryer WM
 Distribution Board / Store DB/ST

Fridge F
 Induction Hob IH
 Shoe Cabinet SC
 Washer cum Dryer WM
 Distribution Board / Store DB/ST

✦ Type B3(p)

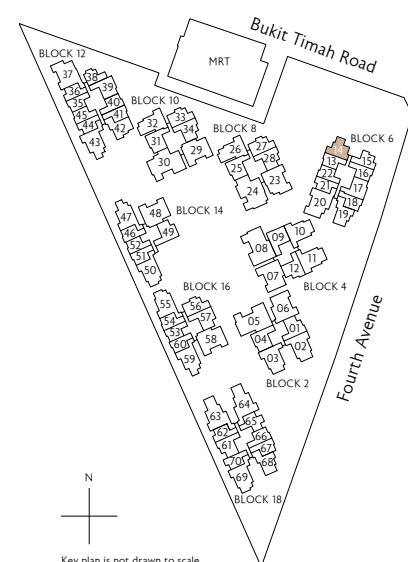
60 sq m / 646 sq ft
 Inclusive of 6 sq m PES
 & 4 sq m AC Ledge

Block 6
 #01-14

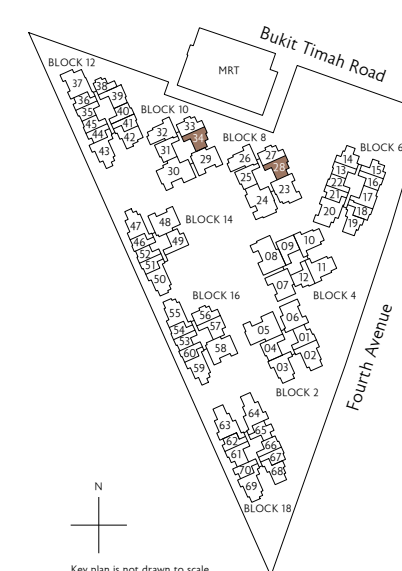
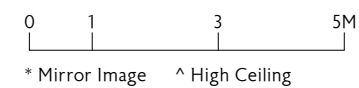
✦ Type B3

60 sq m / 646 sq ft
 Inclusive of 6 sq m Balcony
 & 4 sq m AC Ledge

Block 6
 #02-14 to #10-14



N
 Key plan is not drawn to scale



N
 Key plan is not drawn to scale

✦ Type BP1a(p)

64 sq m / 689 sq ft
 Inclusive of 6 sq m PES
 & 3 sq m AC Ledge

Block 8
 #01-28

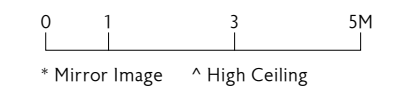
Block 10
 #01-34

✦ Type BP1a

64 sq m / 689 sq ft
 Inclusive of 6 sq m Balcony
 & 3 sq m AC Ledge

Block 8
 #02-28 to #10-28

Block 10
 #02-34 to #10-34

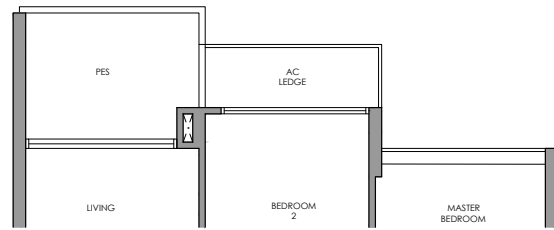


All plans are subject to change as may be required or approved by the relevant authorities. All floor areas are approximate measurements only and are subject to final survey. The balcony shall not be enclosed except with the approved balcony screen. For an illustration of the approved balcony screen, please refer to the diagram annexed hereto as "Annexure 1"

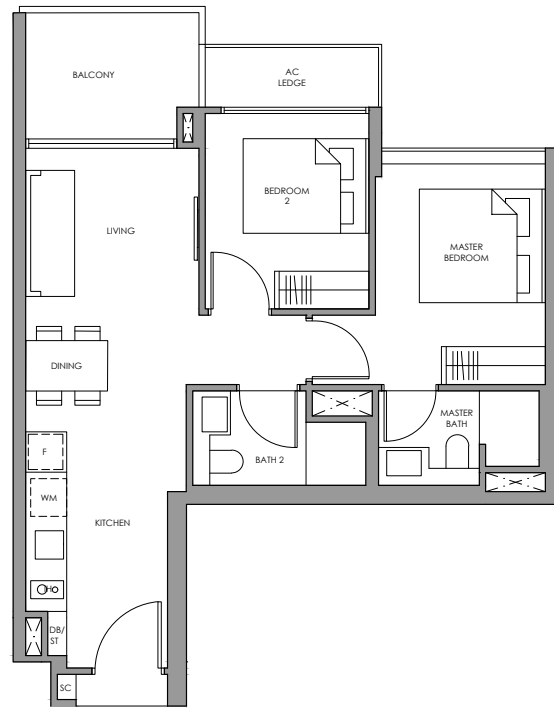
All plans are subject to change as may be required or approved by the relevant authorities. All floor areas are approximate measurements only and are subject to final survey. The balcony shall not be enclosed except with the approved balcony screen. For an illustration of the approved balcony screen, please refer to the diagram annexed hereto as "Annexure 1"

2-Bedroom Premium

Type BP1b(p)



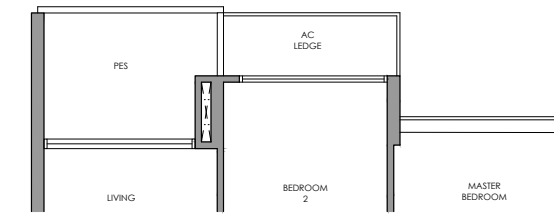
Type BP1b



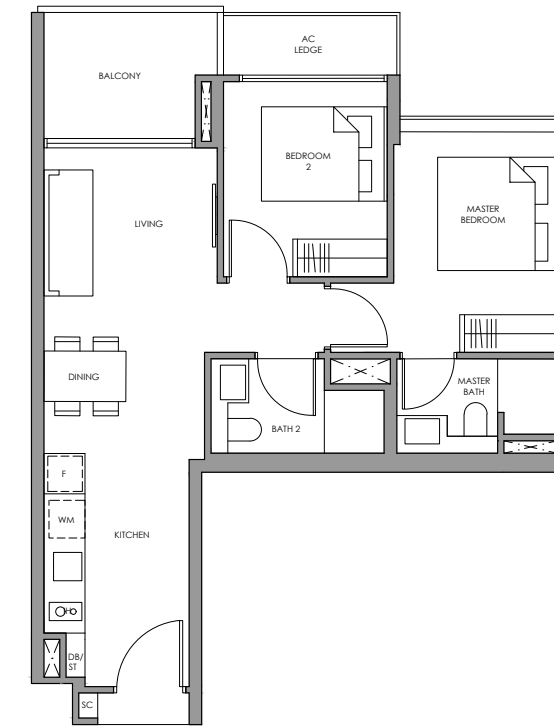
Fridge F
 Induction Hob IH
 Shoe Cabinet SC
 Washer cum Dryer WM
 Distribution Board / Store DB/ST

2-Bedroom Premium

Type BP1c(p)



Type BP1c



Fridge F
 Induction Hob IH
 Shoe Cabinet SC
 Washer cum Dryer WM
 Distribution Board / Store DB/ST

Type BP1b(p)

64 sq m / 689 sq ft
 Inclusive of 6 sq m PES
 & 3 sq m AC Ledge

Block 2
 #01-01 *

Block 4
 #01-12

Block 18
 #01-61 *

0 1 3 5M

* Mirror Image ^ High Ceiling

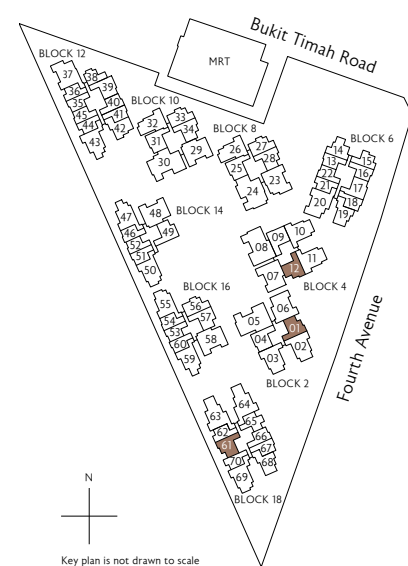
Type BP1b

64 sq m / 689 sq ft
 Inclusive of 6 sq m Balcony
 & 3 sq m AC Ledge

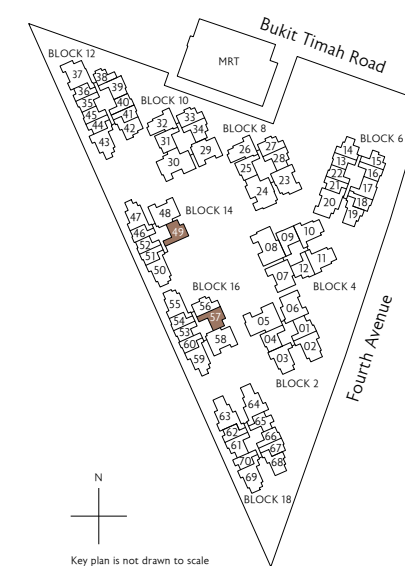
Block 2
 #02-01 to #06-01 *

Block 4
 #02-12 to #06-12

Block 18
 #02-61 to #06-61 *



Key plan is not drawn to scale



Key plan is not drawn to scale

Type BP1c(p)

65 sq m / 700 sq ft
 Inclusive of 6 sq m PES
 & 3 sq m AC Ledge

Block 14
 #01-49 *

Block 16
 #01-57

Type BP1c

65 sq m / 700 sq ft
 Inclusive of 6 sq m Balcony
 & 3 sq m AC Ledge

Block 14
 #02-49 *^

Block 16
 #02-57 ^

0 1 3 5M

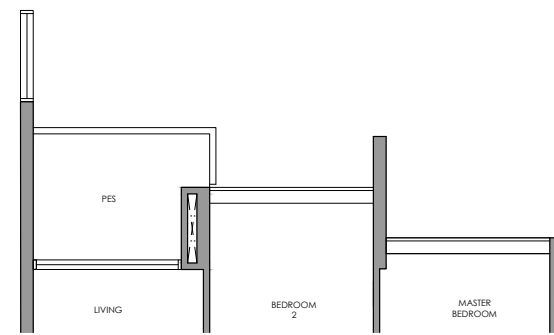
* Mirror Image ^ High Ceiling

All plans are subject to change as may be required or approved by the relevant authorities. All floor areas are approximate measurements only and are subject to final survey. The balcony shall not be enclosed except with the approved balcony screen. For an illustration of the approved balcony screen, please refer to the diagram annexed hereto as "Annexure 1"

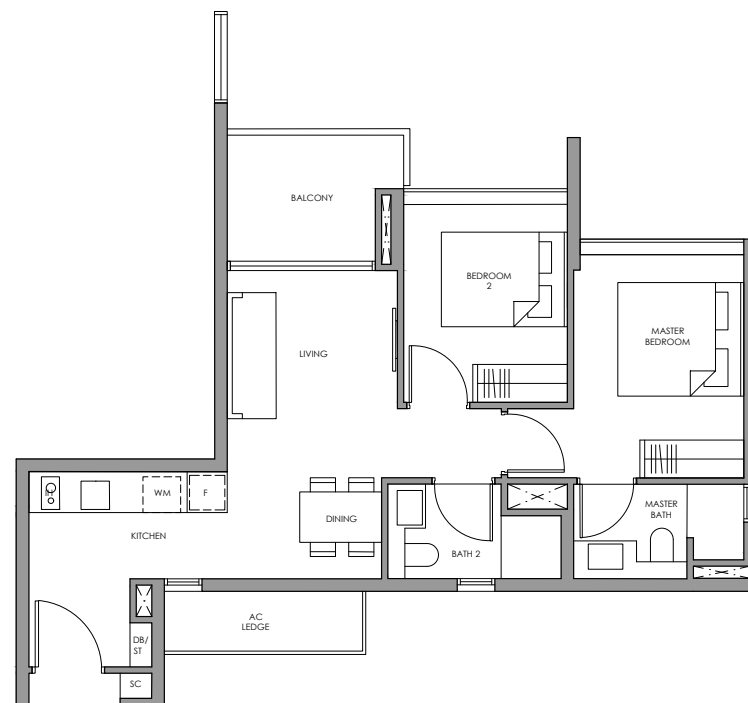
All plans are subject to change as may be required or approved by the relevant authorities. All floor areas are approximate measurements only and are subject to final survey. The balcony shall not be enclosed except with the approved balcony screen. For an illustration of the approved balcony screen, please refer to the diagram annexed hereto as "Annexure 1"

2-Bedroom Premium

Type BP2(p)



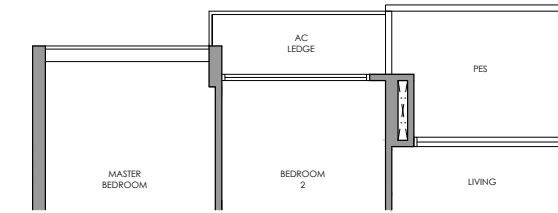
Type BP2



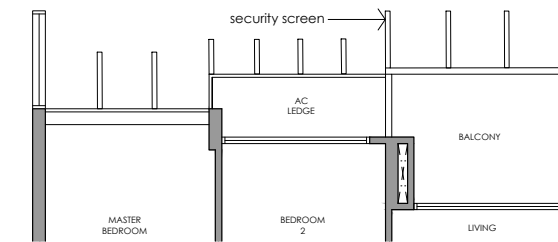
Fridge F
 Induction Hob IH
 Shoe Cabinet SC
 Washer cum Dryer WM
 Distribution Board / Store DB/ST

2-Bedroom Premium

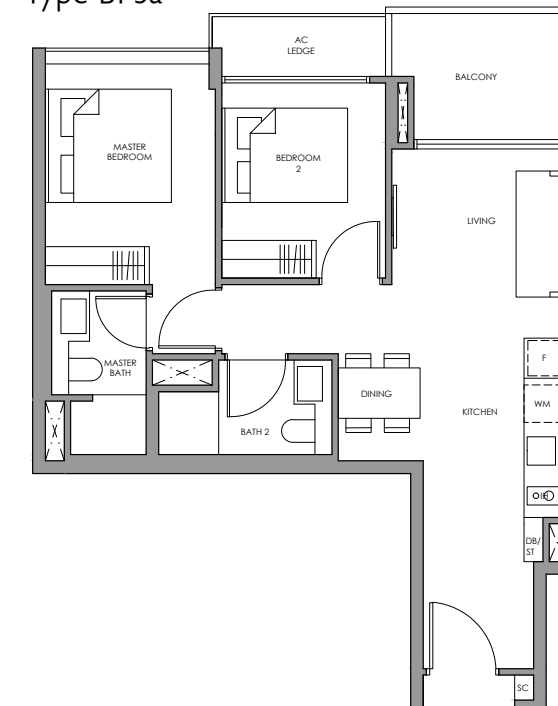
Type BP3a(p)



Type BP3a WITH SECURITY SCREEN



Type BP3a



Fridge F
 Induction Hob IH
 Shoe Cabinet SC
 Washer cum Dryer WM
 Distribution Board / Store DB/ST

✦ Type BP2(p)

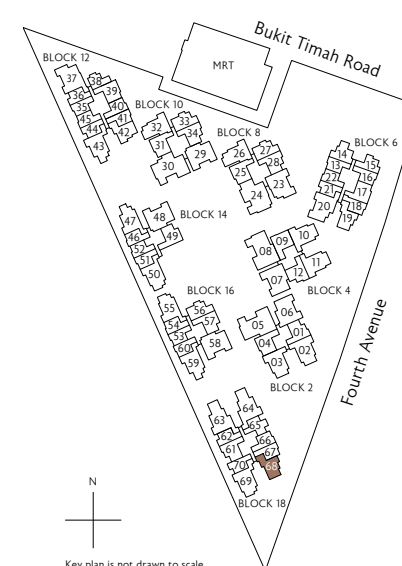
66 sq m / 710 sq ft
 Inclusive of 6 sq m PES
 & 4 sq m AC Ledge

Block 18
 #01-68

✦ Type BP2

66 sq m / 710 sq ft
 Inclusive of 6 sq m Balcony
 & 4 sq m AC Ledge

Block 18
 #02-68 to #06-68



N
 Key plan is not drawn to scale

0 1 3 5M
 * Mirror Image ^ High Ceiling

✦ Type BP3a(p)

66 sq m / 710 sq ft
 Inclusive of 6 sq m PES
 & 3 sq m AC Ledge

Block 6
 #01-17

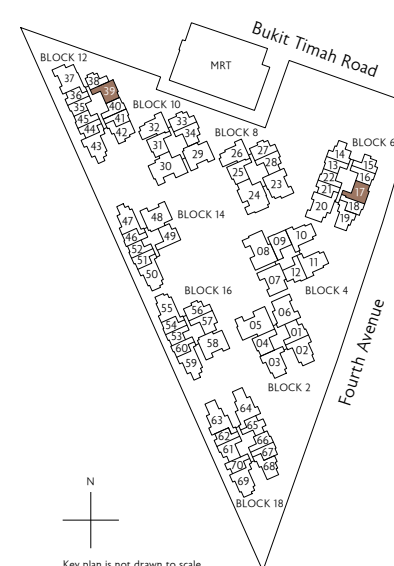
Block 12
 #01-39 *

✦ Type BP3a

66 sq m / 710 sq ft
 Inclusive of 6 sq m Balcony
 & 3 sq m AC Ledge

Block 6
 #02-17 to #06-17
 #07-17 to #10-17 (security screen)

Block 12
 #02-39 to #10-39 *



N
 Key plan is not drawn to scale

0 1 3 5M
 * Mirror Image ^ High Ceiling

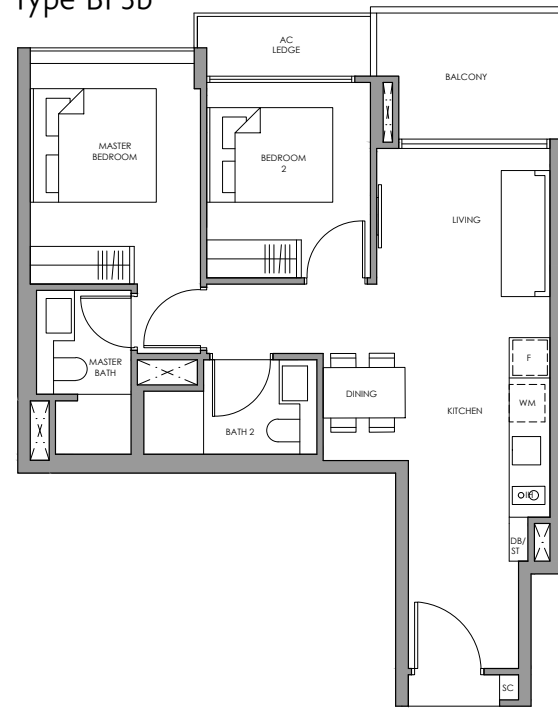
All plans are subject to change as may be required or approved by the relevant authorities. All floor areas are approximate measurements only and are subject to final survey. The balcony shall not be enclosed except with the approved balcony screen. For an illustration of the approved balcony screen, please refer to the diagram annexed hereto as "Annexure 1"

All plans are subject to change as may be required or approved by the relevant authorities. All floor areas are approximate measurements only and are subject to final survey. The balcony shall not be enclosed except with the approved balcony screen. For an illustration of the approved balcony screen, please refer to the diagram annexed hereto as "Annexure 1"

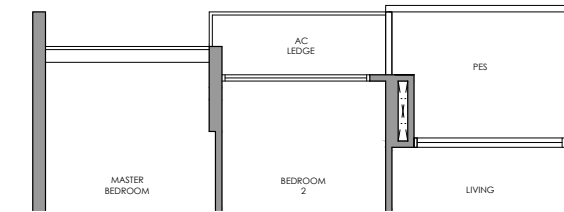
2-Bedroom Premium

2-Bedroom Premium

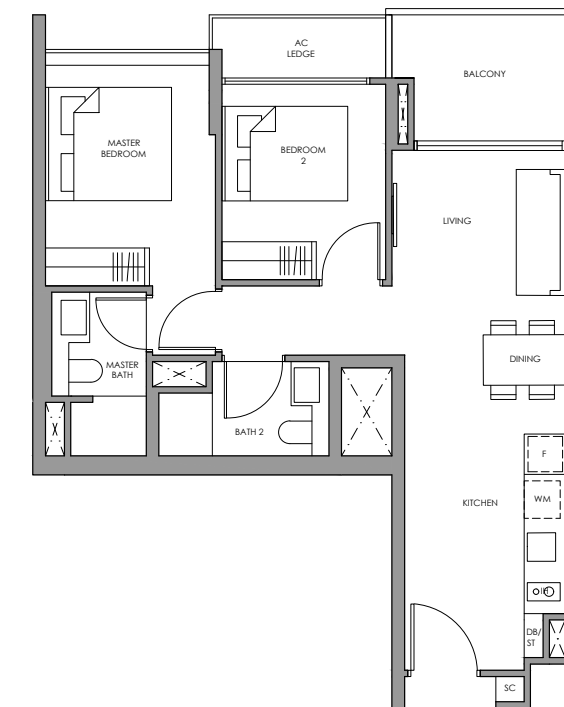
Type BP3b



Type BP4(p)



Type BP4



Fridge F
 Induction Hob IH
 Shoe Cabinet SC
 Washer cum Dryer WM
 Distribution Board / Store DB/ST

Fridge F
 Induction Hob IH
 Shoe Cabinet SC
 Washer cum Dryer WM
 Distribution Board / Store DB/ST



Type BP3b

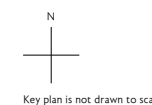
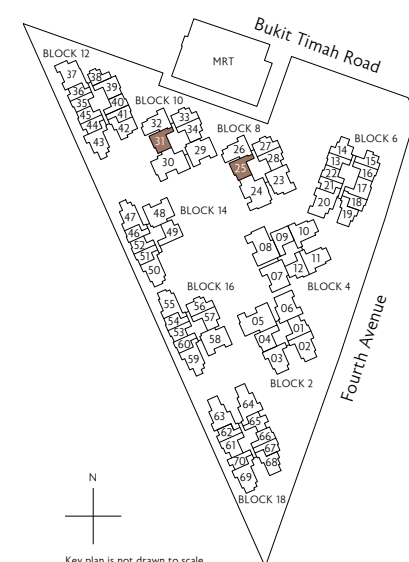
66 sq m / 710 sq ft
 Inclusive of 6 sq m Balcony
 & 3 sq m AC Ledge

Block 8
 #02-25 to #10-25

Block 10
 #02-31 to #10-31



* Mirror Image ^ High Ceiling



All plans are subject to change as may be required or approved by the relevant authorities. All floor areas are approximate measurements only and are subject to final survey. The balcony shall not be enclosed except with the approved balcony screen. For an illustration of the approved balcony screen, please refer to the diagram annexed hereto as "Annexure 1"

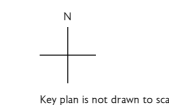


Type BP4(p)

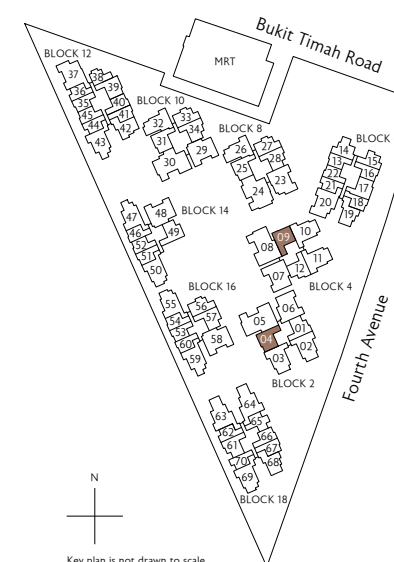
66 sq m / 710 sq ft
 Inclusive of 6 sq m PES
 & 3 sq m AC Ledge

Block 2
 #01-04

Block 4
 #01-09 *



* Mirror Image ^ High Ceiling



All plans are subject to change as may be required or approved by the relevant authorities. All floor areas are approximate measurements only and are subject to final survey. The balcony shall not be enclosed except with the approved balcony screen. For an illustration of the approved balcony screen, please refer to the diagram annexed hereto as "Annexure 1"



Type BP4

66 sq m / 710 sq ft
 Inclusive of 6 sq m Balcony
 & 3 sq m AC Ledge

Block 2
 #02-04 to #06-04

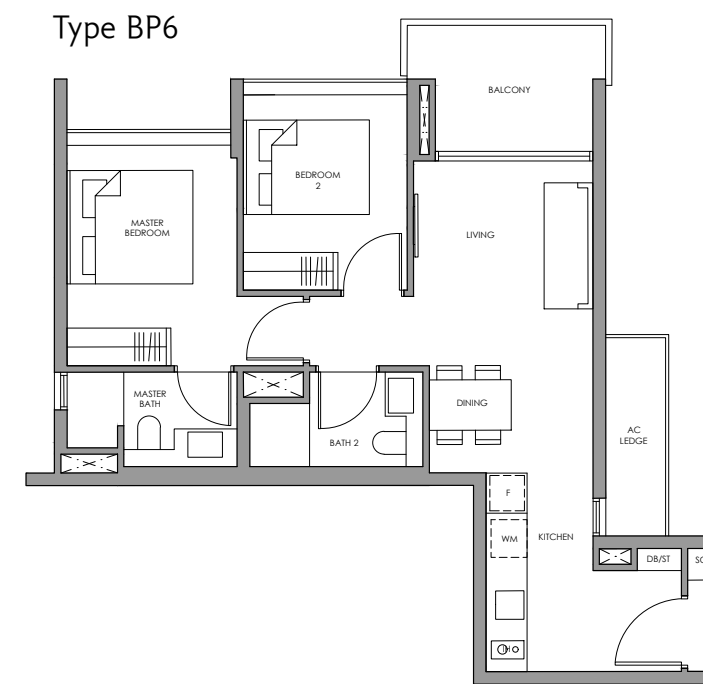
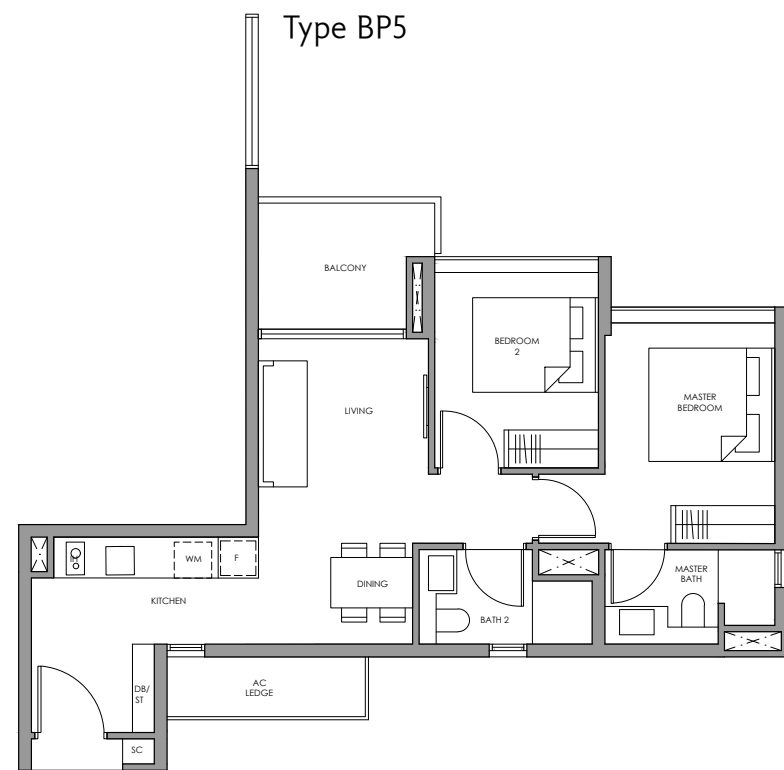
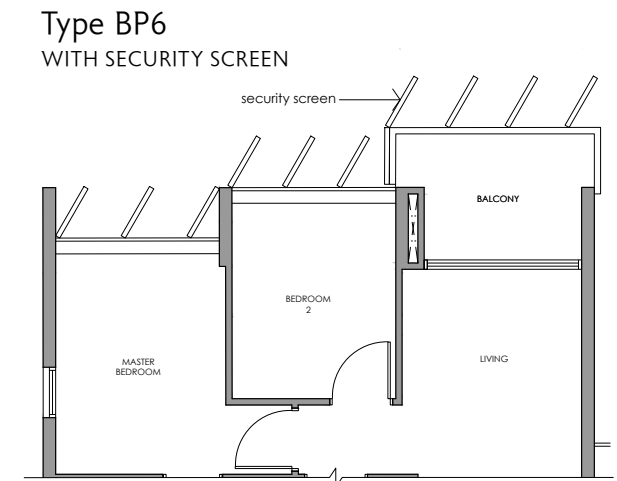
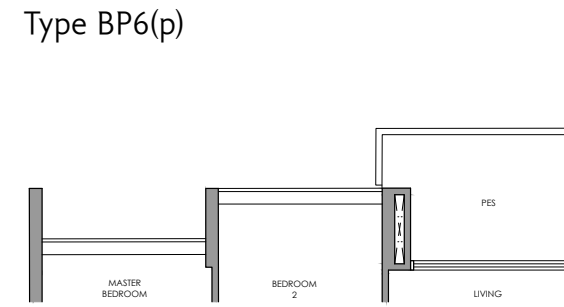
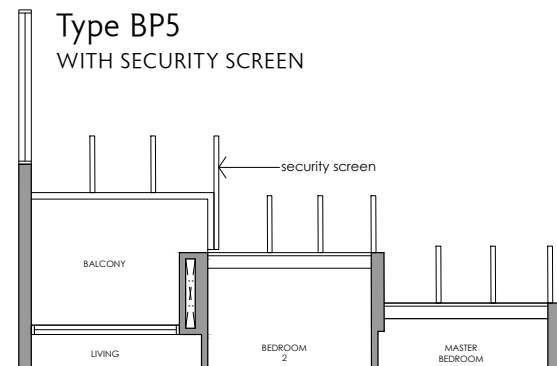
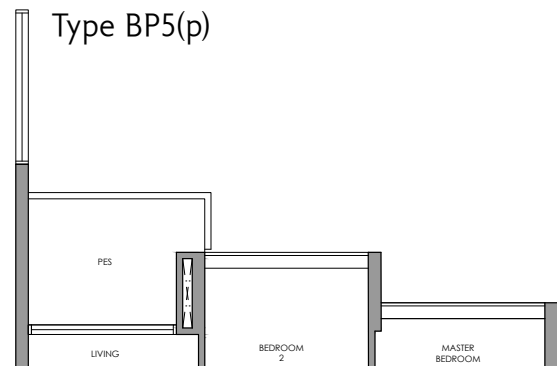
Block 4
 #02-09 to #06-09 *



* Mirror Image ^ High Ceiling

2-Bedroom Premium

2-Bedroom Premium



Fridge
Induction Hob
Shoe Cabinet
Washer cum Dryer
Distribution Board / Store

F
IH
SC
WM
DB/ST

Fridge
Induction Hob
Shoe Cabinet
Washer cum Dryer
Distribution Board / Store

F
IH
SC
WM
DB/ST

Type BP5(p)

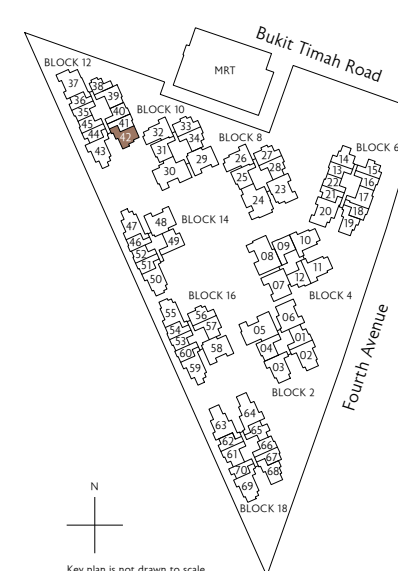
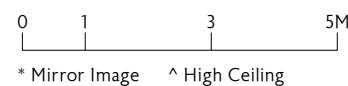
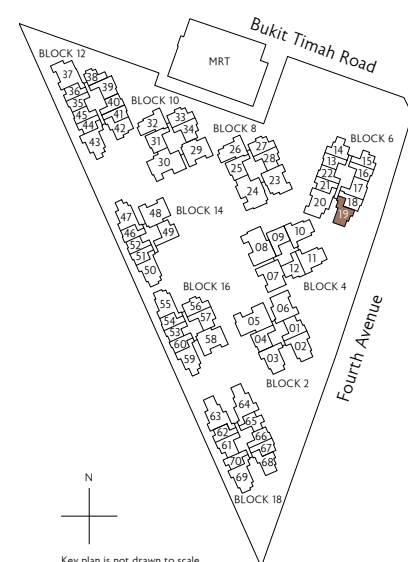
66 sq m / 710 sq ft
Inclusive of 6 sq m PES
& 4 sq m AC Ledge

Block 6
#01-19

Type BP5

66 sq m / 710 sq ft
Inclusive of 6 sq m Balcony
& 4 sq m AC Ledge

Block 6
#02-19 to #06-19
#07-19 to #10-19 (security screen)



Type BP6(p)

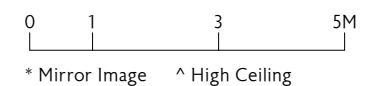
67 sq m / 721 sq ft
Inclusive of 6 sq m PES
& 4 sq m AC Ledge

Block 12
#01-42

Type BP6

67 sq m / 721 sq ft
Inclusive of 6 sq m Balcony
& 4 sq m AC Ledge

Block 12
#02-42 to #07-42
#08-42 to #10-42 (security screen)



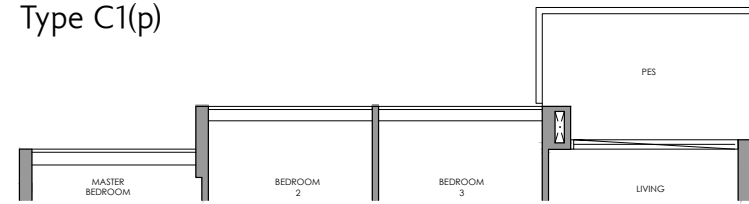
All plans are subject to change as may be required or approved by the relevant authorities. All floor areas are approximate measurements only and are subject to final survey. The balcony shall not be enclosed except with the approved balcony screen. For an illustration of the approved balcony screen, please refer to the diagram annexed hereto as "Annexure 1"

All plans are subject to change as may be required or approved by the relevant authorities. All floor areas are approximate measurements only and are subject to final survey. The balcony shall not be enclosed except with the approved balcony screen. For an illustration of the approved balcony screen, please refer to the diagram annexed hereto as "Annexure 1"

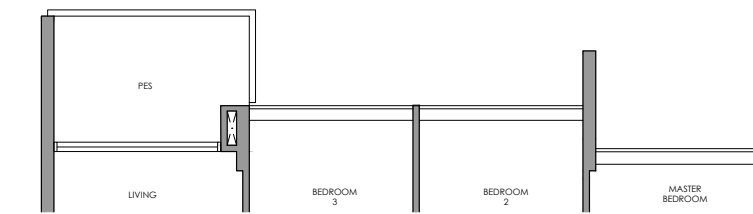
3-Bedroom

3-Bedroom

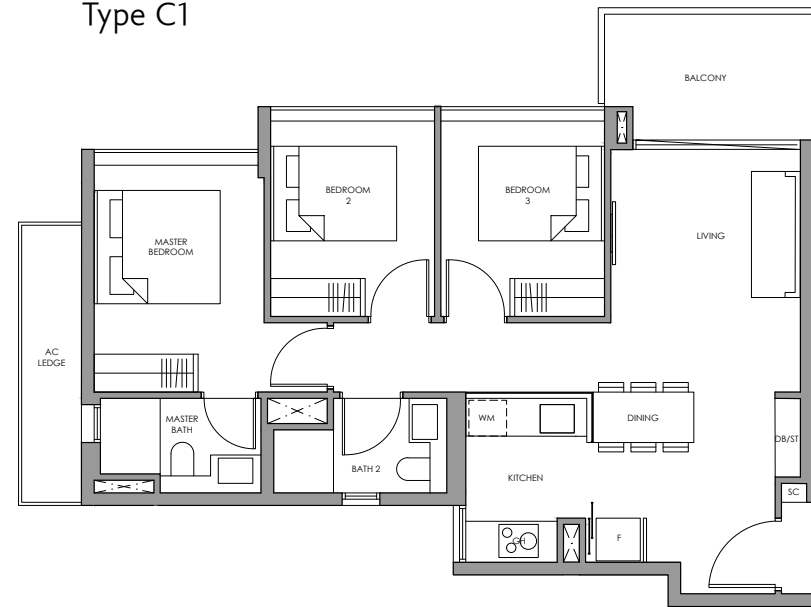
Type C1(p)



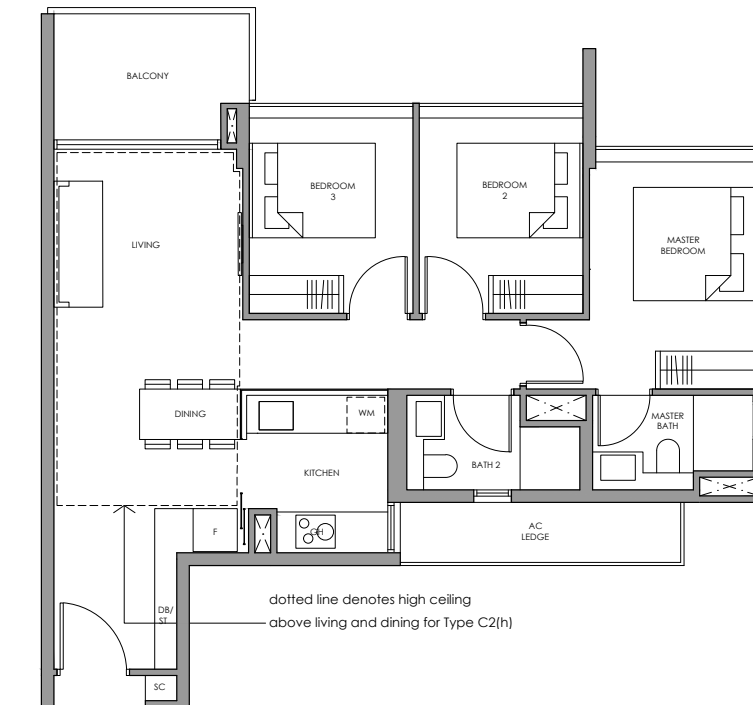
Type C2(p)



Type C1



Type C2
Type C2(h)



Fridge F
Gas Hob GH
Shoe Cabinet SC
Washer cum Dryer WM
Distribution Board / Store DB/ST

Fridge F
Gas Hob GH
Shoe Cabinet SC
Washer cum Dryer WM
Distribution Board / Store DB/ST

+
Type C1(p)
85 sq m / 915 sq ft
Inclusive of 7 sq m PES
& 5 sq m AC Ledge

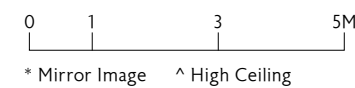
+
Type C1
85 sq m / 915 sq ft
Inclusive of 7 sq m Balcony
& 5 sq m AC Ledge

Block 8
#01-26

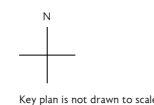
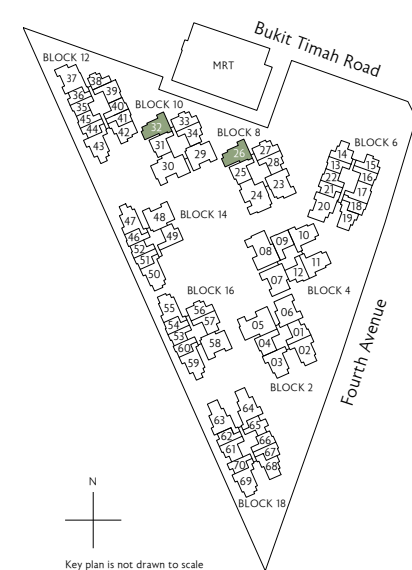
Block 8
#02-26 to #10-26

Block 10
#01-32

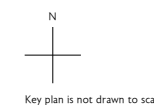
Block 10
#02-32 to #10-32



* Mirror Image ^ High Ceiling



Key plan is not drawn to scale



Key plan is not drawn to scale

+
Type C2(p)
88 sq m / 947 sq ft
Inclusive of 7 sq m PES
& 5 sq m AC Ledge

+
Type C2
88 sq m / 947 sq ft
Inclusive of 7 sq m Balcony
& 5 sq m AC Ledge

+
Type C2(h)
88 sq m / 947 sq ft
Inclusive of 7 sq m Balcony
& 5 sq m AC Ledge

Block 2
#01-02
#01-03 *

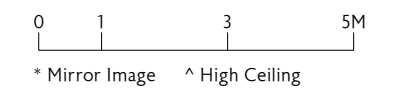
Block 2
#02-02 to #05-02
#02-03 to #05-03 *

Block 2
#06-02
#06-03 *

Block 4
#01-10
#01-11 *

Block 4
#02-10 to #05-10
#02-11 to #06-11 *

Block 4
#06-10



* Mirror Image ^ High Ceiling

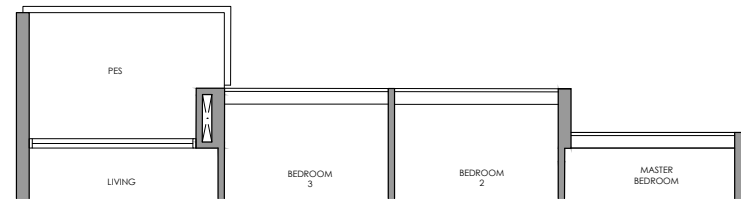
All plans are subject to change as may be required or approved by the relevant authorities. All floor areas are approximate measurements only and are subject to final survey. The balcony shall not be enclosed except with the approved balcony screen. For an illustration of the approved balcony screen, please refer to the diagram annexed hereto as "Annexure 1"

All plans are subject to change as may be required or approved by the relevant authorities. All floor areas are approximate measurements only and are subject to final survey. The balcony shall not be enclosed except with the approved balcony screen. For an illustration of the approved balcony screen, please refer to the diagram annexed hereto as "Annexure 1"

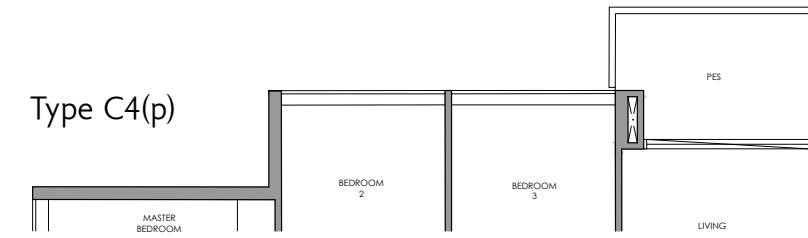
3-Bedroom

3-Bedroom

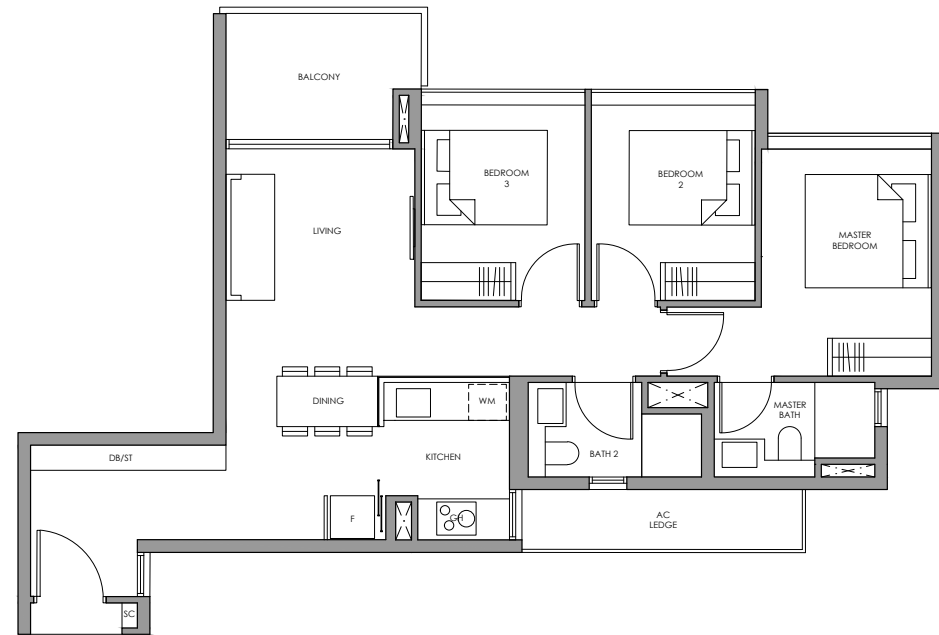
Type C3(p)



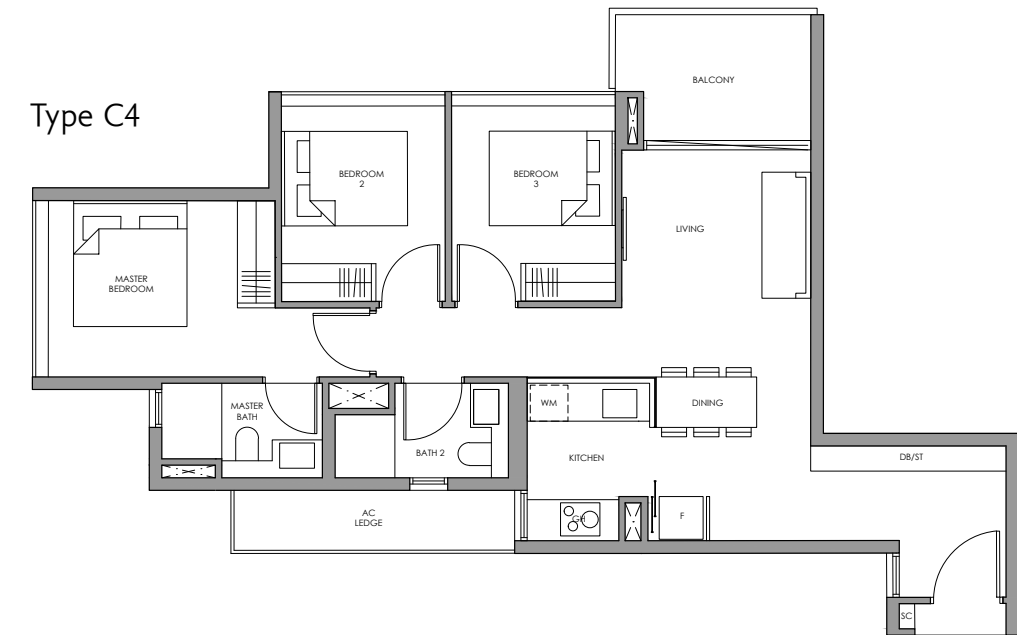
Type C4(p)



Type C3



Type C4



Fridge F
Gas Hob GH
Shoe Cabinet SC
Washer cum Dryer WM
Distribution Board / Store DB/ST

Fridge F
Gas Hob GH
Shoe Cabinet SC
Washer cum Dryer WM
Distribution Board / Store DB/ST

Type C3(p)

89 sq m / 958 sq ft
Inclusive of 7 sq m PES
& 5 sq m AC Ledge

Block 14
#01-50 *

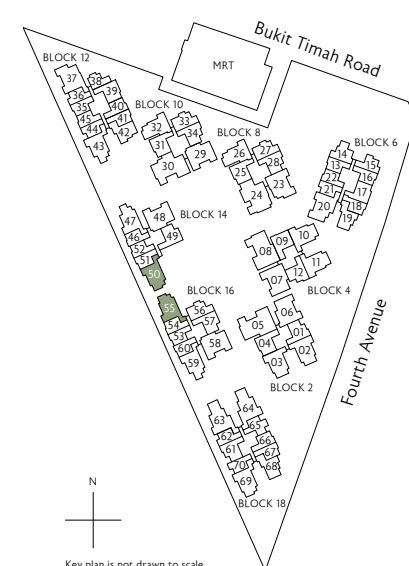
Block 16
#01-55

Type C3

89 sq m / 958 sq ft
Inclusive of 7 sq m Balcony
& 5 sq m AC Ledge

Block 14
#02-50 *^

Block 16
#02-55 ^



Key plan is not drawn to scale

0 1 3 5M
* Mirror Image ^ High Ceiling



Key plan is not drawn to scale

Type C4(p)

89 sq m / 958 sq ft
Inclusive of 7 sq m PES
& 5 sq m AC Ledge

Block 14
#01-47 *

Block 16
#01-59

Type C4

89 sq m / 958 sq ft
Inclusive of 7 sq m Balcony
& 5 sq m AC Ledge

Block 14
#02-47 *^

Block 16
#02-59 ^

0 1 3 5M
* Mirror Image ^ High Ceiling

All plans are subject to change as may be required or approved by the relevant authorities. All floor areas are approximate measurements only and are subject to final survey. The balcony shall not be enclosed except with the approved balcony screen. For an illustration of the approved balcony screen, please refer to the diagram annexed hereto as "Annexure 1"

All plans are subject to change as may be required or approved by the relevant authorities. All floor areas are approximate measurements only and are subject to final survey. The balcony shall not be enclosed except with the approved balcony screen. For an illustration of the approved balcony screen, please refer to the diagram annexed hereto as "Annexure 1"

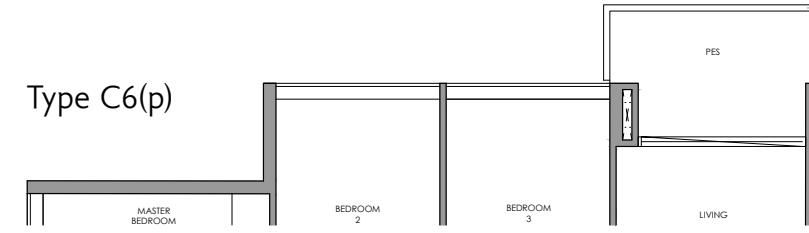
3-Bedroom

3-Bedroom

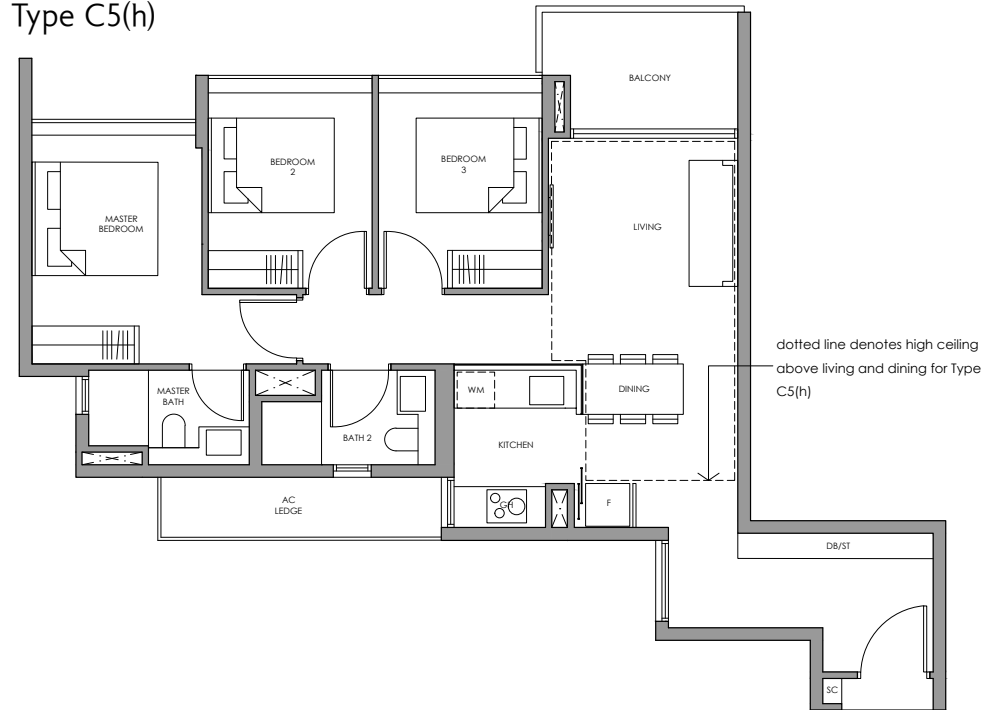
Type C5(p)



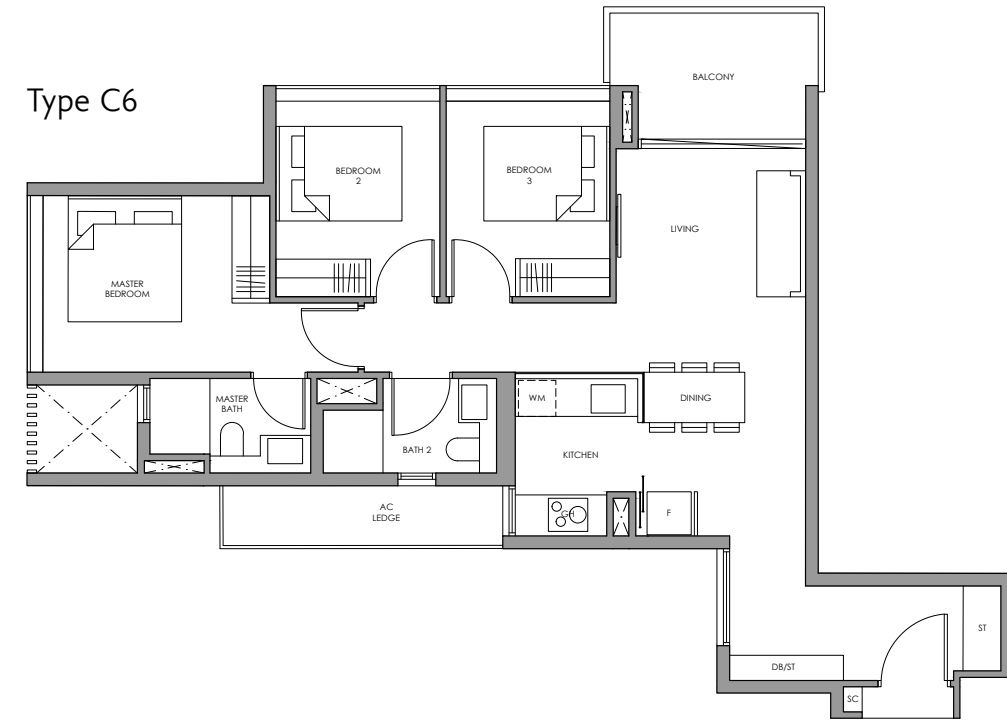
Type C6(p)



Type C5
Type C5(h)



Type C6



Fridge
Gas Hob
Shoe Cabinet
Washer cum Dryer
Distribution Board / Store

F
GH
SC
WM
DB/ST

Fridge
Gas Hob
Shoe Cabinet
Washer cum Dryer
Distribution Board / Store

F
GH
SC
WM
DB/ST

+
Type C5(p)
90 sq m / 969 sq ft
Inclusive of 6 sq m PES
& 5 sq m AC Ledge

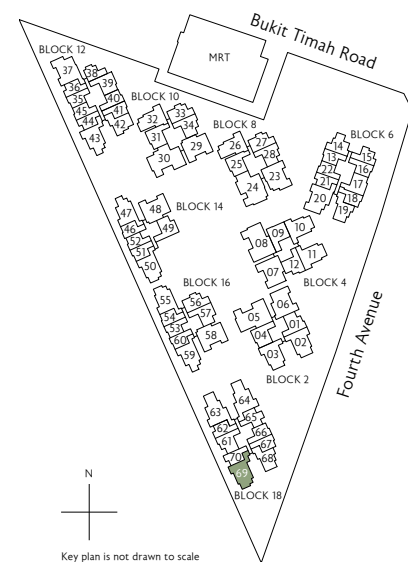
Block 18
#01-69

+
Type C5
90 sq m / 969 sq ft
Inclusive of 6 sq m Balcony
& 5 sq m AC Ledge

Block 18
#02-69 to #05-69

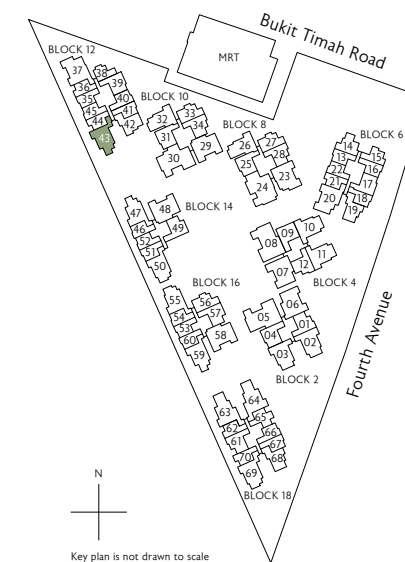
+
Type C5(h)
90 sq m / 969 sq ft
Inclusive of 6 sq m Balcony
& 5 sq m AC Ledge

Block 18
#06-69



N
Key plan is not drawn to scale

0 1 3 5M
* Mirror Image ^ High Ceiling



N
Key plan is not drawn to scale

+
Type C6(p)
90 sq m / 969 sq ft
Inclusive of 7 sq m PES
& 5 sq m AC Ledge

Block 12
#01-43

+
Type C6
90 sq m / 969 sq ft
Inclusive of 7 sq m Balcony
& 5 sq m AC Ledge

Block 12
#02-43 to #06-43

0 1 3 5M
* Mirror Image ^ High Ceiling

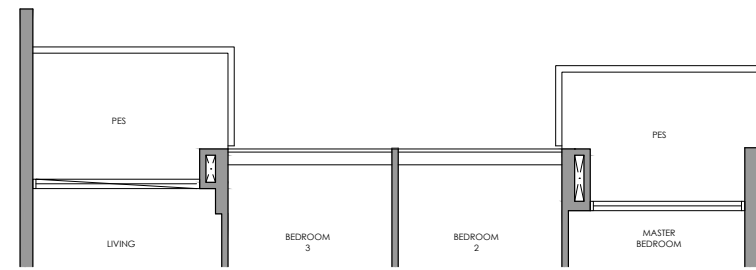
All plans are subject to change as may be required or approved by the relevant authorities. All floor areas are approximate measurements only and are subject to final survey. The balcony shall not be enclosed except with the approved balcony screen. For an illustration of the approved balcony screen, please refer to the diagram annexed hereto as "Annexure 1"

All plans are subject to change as may be required or approved by the relevant authorities. All floor areas are approximate measurements only and are subject to final survey. The balcony shall not be enclosed except with the approved balcony screen. For an illustration of the approved balcony screen, please refer to the diagram annexed hereto as "Annexure 1"

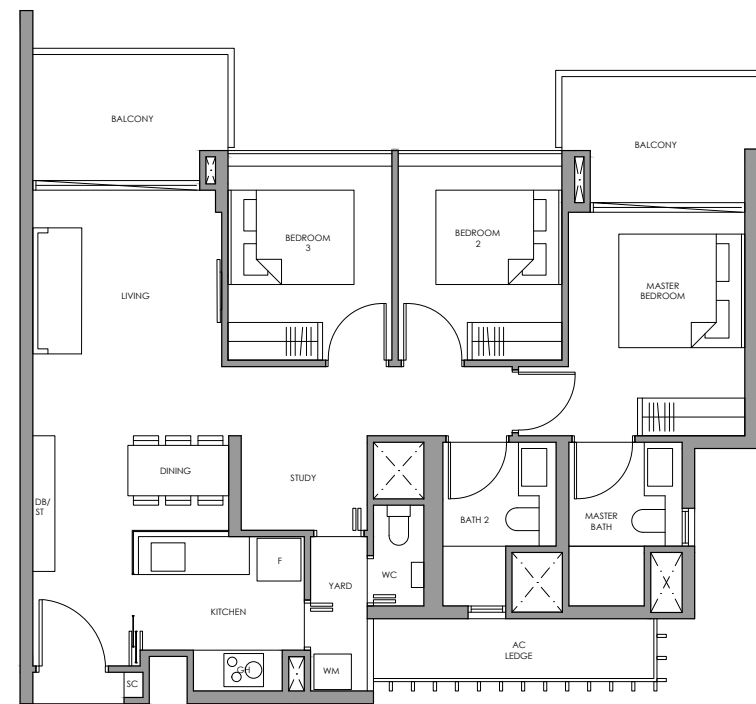
3-Bedroom + Study

3-Bedroom + Study

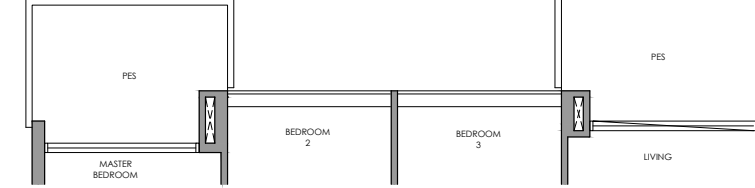
Type CS1(p)



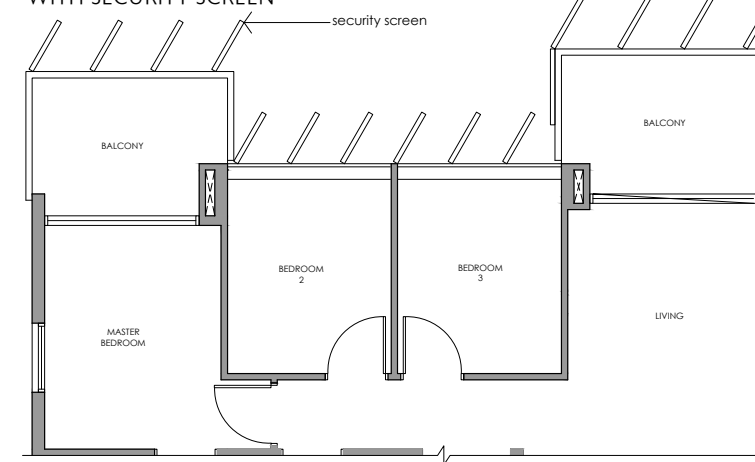
Type CS1



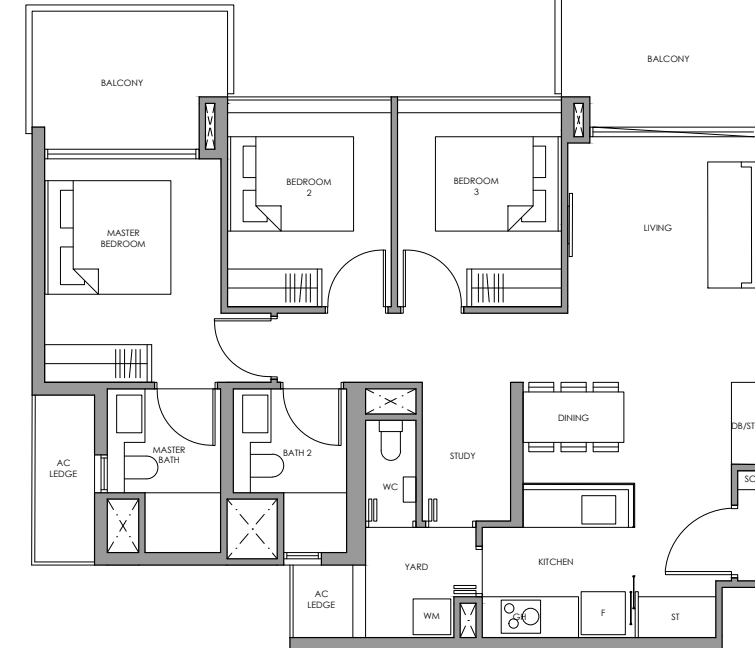
Type CS2(p)



Type CS2
WITH SECURITY SCREEN



Type CS2



Fridge
Gas Hob
Shoe Cabinet
Washer cum Dryer
Distribution Board / Store

F
GH
SC
WM
DB/ST

Fridge
Gas Hob
Shoe Cabinet
Washer cum Dryer
Distribution Board / Store

F
GH
SC
WM
DB/ST

+

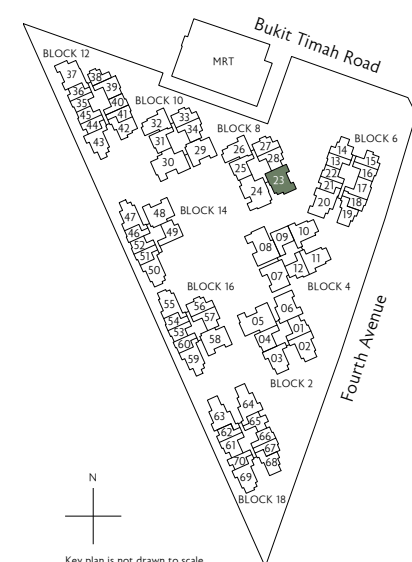
Type CS1(p)
100 sq m / 1076 sq ft
Inclusive of 13 sq m PES
& 5 sq m AC Ledge

Block 8
#01-23

+

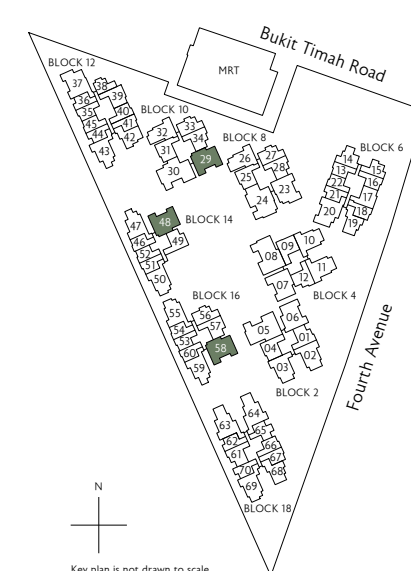
Type CS1
100 sq m / 1076 sq ft
Inclusive of 13 sq m Balcony
& 5 sq m AC Ledge

Block 8
#02-23 to #10-23



N
Key plan is not drawn to scale

0 1 3 5M
* Mirror Image ^ High Ceiling



N
Key plan is not drawn to scale

+

Type CS2(p)
103 sq m / 1109 sq ft
Inclusive of 15 sq m PES
& 5 sq m AC Ledge

Block 10
#01-29

Block 14
#01-48 *

Block 16
#01-58

+

Type CS2
103 sq m / 1109 sq ft
Inclusive of 15 sq m Balcony
& 5 sq m AC Ledge

Block 10
#02-29 to #07-29

#08-29 to #10-29 (security screen)

Block 14
#02-48 *^

Block 16
#02-58 ^

0 1 3 5M
* Mirror Image ^ High Ceiling

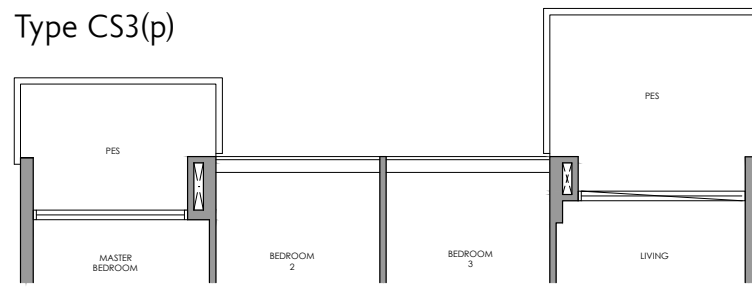
All plans are subject to change as may be required or approved by the relevant authorities. All floor areas are approximate measurements only and are subject to final survey. The balcony shall not be enclosed except with the approved balcony screen. For an illustration of the approved balcony screen, please refer to the diagram annexed hereto as "Annexure 1"

All plans are subject to change as may be required or approved by the relevant authorities. All floor areas are approximate measurements only and are subject to final survey. The balcony shall not be enclosed except with the approved balcony screen. For an illustration of the approved balcony screen, please refer to the diagram annexed hereto as "Annexure 1"

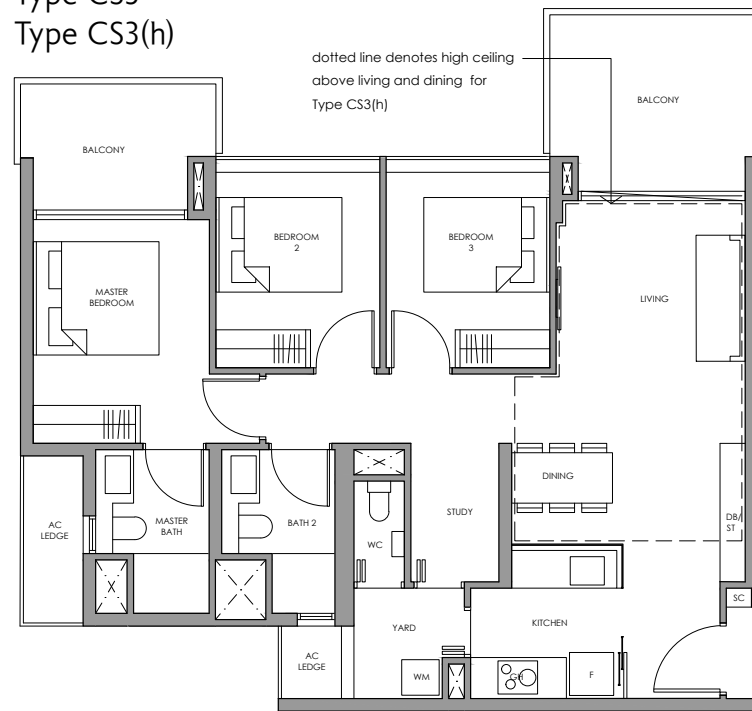
3-Bedroom + Study

3-Bedroom + Study

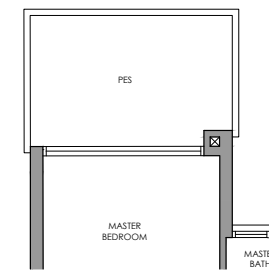
Type CS3(p)



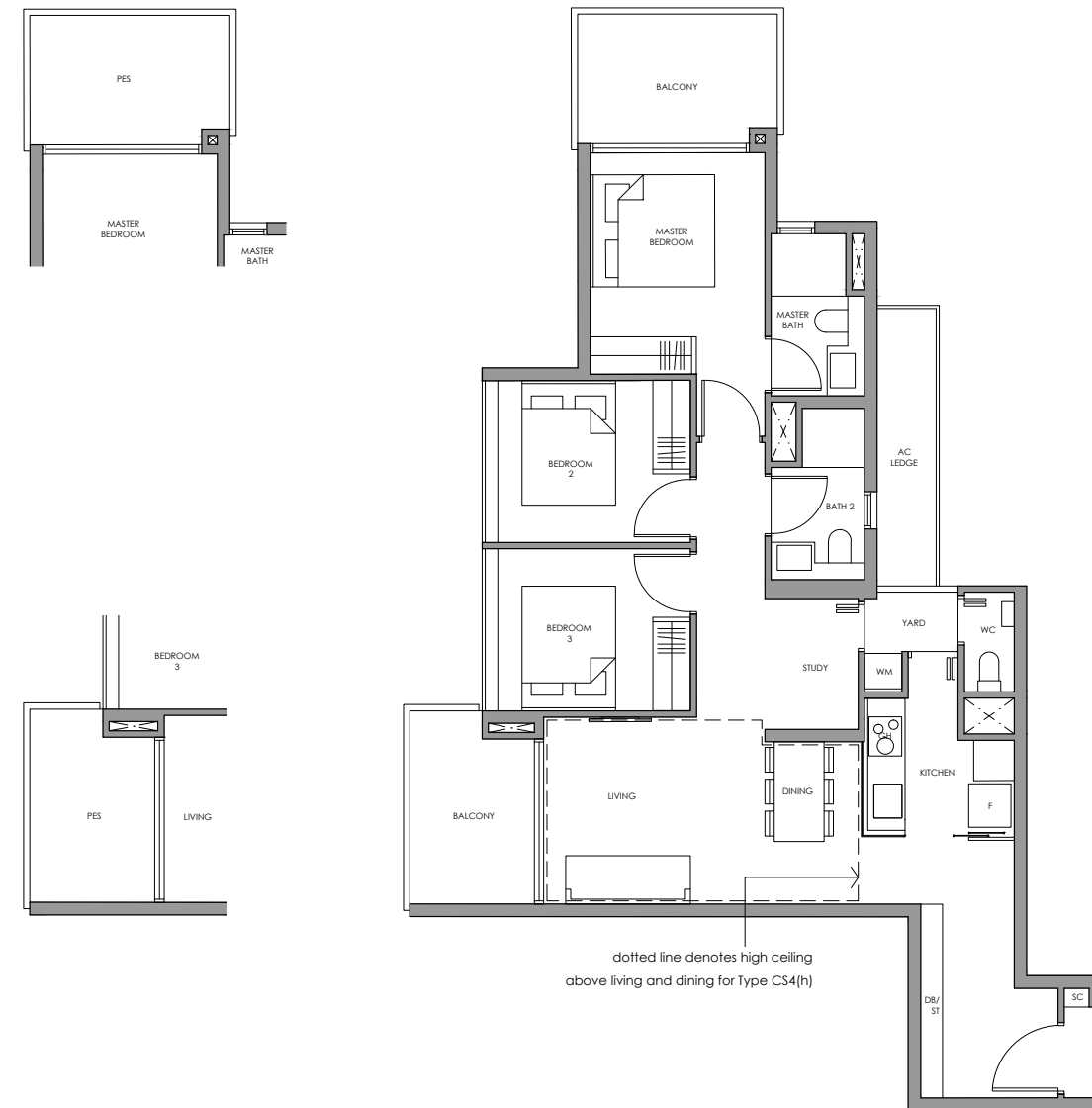
Type CS3
Type CS3(h)



Type CS4a(p)



Type CS4a
Type CS4a(h)



Fridge
Gas Hob
Shoe Cabinet
Washer cum Dryer
Distribution Board / Store

F
GH
SC
WM
DB/ST

Fridge
Gas Hob
Shoe Cabinet
Washer cum Dryer
Distribution Board / Store

F
GH
SC
WM
DB/ST

✦
Type CS3(p)

105 sq m / 1130 sq ft
Inclusive of 16 sq m PES
& 5 sq m AC Ledge

Block 4
#01-07

✦
Type CS3

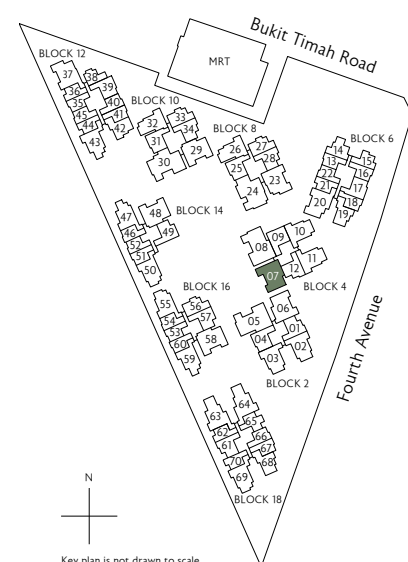
105 sq m / 1130 sq ft
Inclusive of 16 sq m Balcony
& 5 sq m AC Ledge

Block 4
#02-07 to #05-07

✦
Type CS3(h)

105 sq m / 1130 sq ft
Inclusive of 16 sq m Balcony
& 5 sq m AC Ledge

Block 4
#06-07



N
Key plan is not drawn to scale

0 1 3 5M
* Mirror Image ^ High Ceiling

All plans are subject to change as may be required or approved by the relevant authorities. All floor areas are approximate measurements only and are subject to final survey. The balcony shall not be enclosed except with the approved balcony screen. For an illustration of the approved balcony screen, please refer to the diagram annexed hereto as "Annexure 1"

✦
Type CS4a(p)

103 sq m / 1109 sq ft
Inclusive of 14 sq m PES
& 5 sq m AC Ledge

Block 18
#01-63

✦
Type CS4a

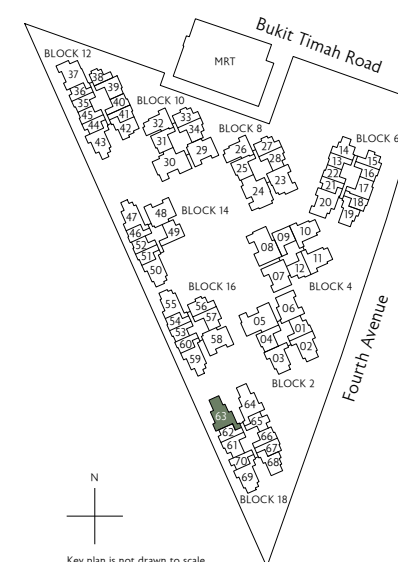
103 sq m / 1109 sq ft
Inclusive of 14 sq m Balcony
& 5 sq m AC Ledge

Block 18
#02-63 to #05-63

✦
Type CS4a(h)

103 sq m / 1109 sq ft
Inclusive of 14 sq m Balcony
& 5 sq m AC Ledge

Block 18
#06-63



N
Key plan is not drawn to scale

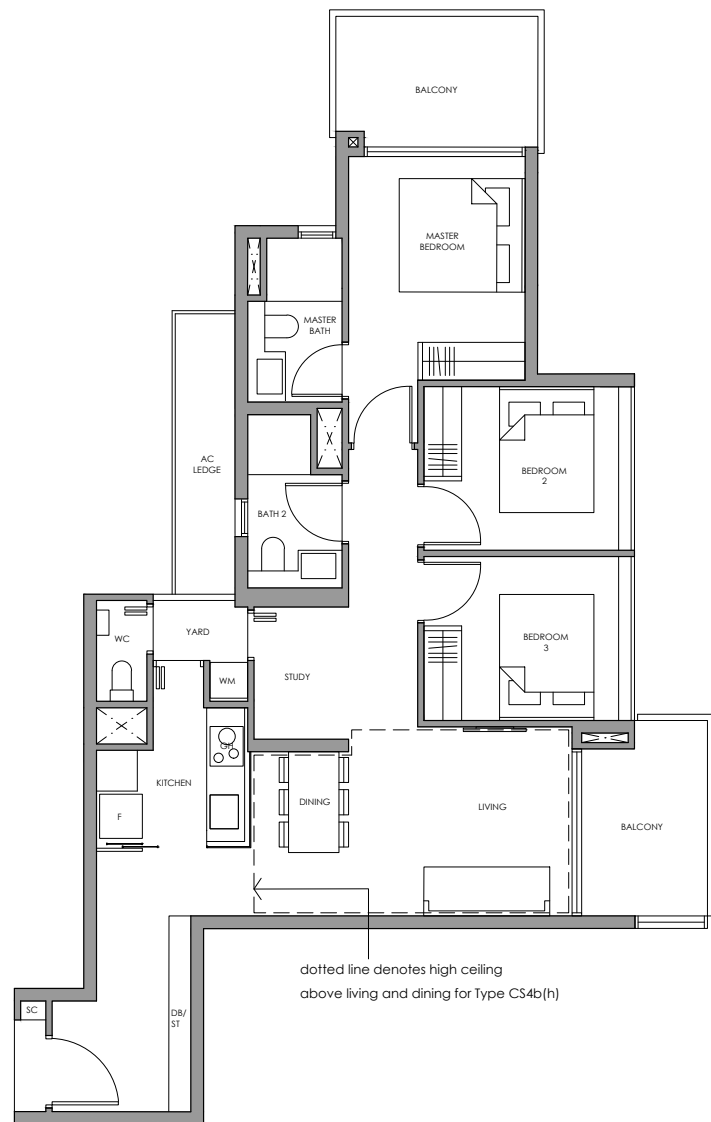
0 1 3 5M
* Mirror Image ^ High Ceiling

All plans are subject to change as may be required or approved by the relevant authorities. All floor areas are approximate measurements only and are subject to final survey. The balcony shall not be enclosed except with the approved balcony screen. For an illustration of the approved balcony screen, please refer to the diagram annexed hereto as "Annexure 1"

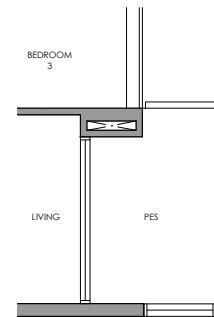
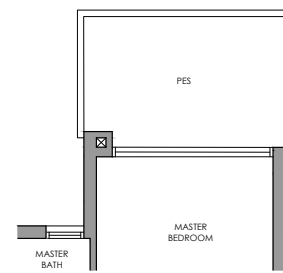
3-Bedroom + Study

3-Bedroom + Study

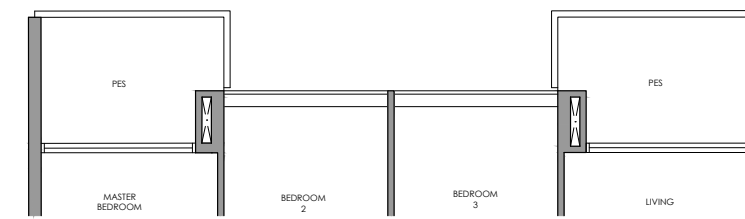
Type CS4b
Type CS4b(h)



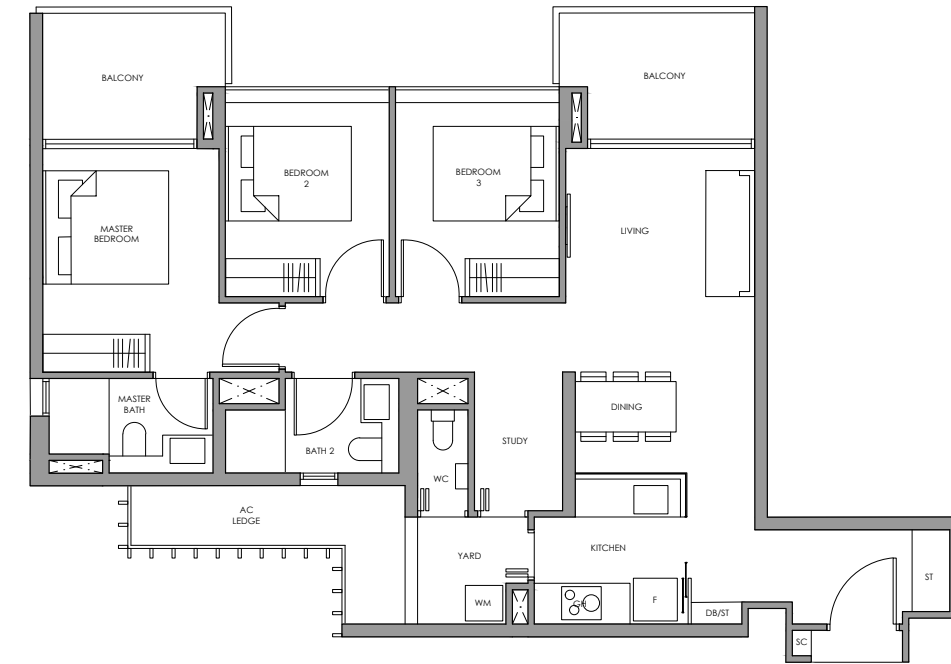
Type CS4b(p)



Type CS5(p)



Type CS5



Fridge
Gas Hob
Shoe Cabinet
Washer cum Dryer
Distribution Board / Store

F
GH
SC
WM
DB/ST

Fridge
Gas Hob
Shoe Cabinet
Washer cum Dryer
Distribution Board / Store

F
GH
SC
WM
DB/ST

✦
Type CS4b(p)

103 sq m / 1109 sq ft
Inclusive of 14 sq m PES
& 5 sq m AC Ledge

Block 18
#01-64

✦
Type CS4b

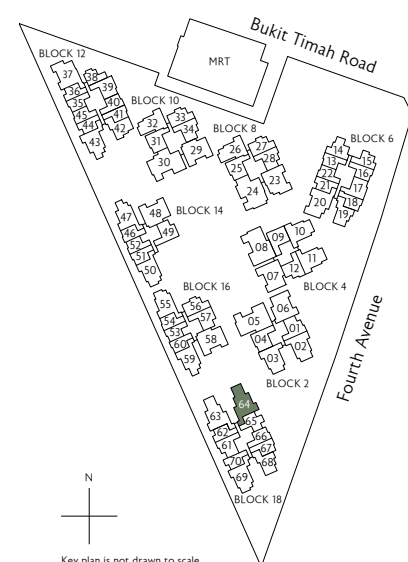
103 sq m / 1109 sq ft
Inclusive of 14 sq m Balcony
& 5 sq m AC Ledge

Block 18
#02-64 to #05-64

✦
Type CS4b(h)

103 sq m / 1109 sq ft
Inclusive of 14 sq m Balcony
& 5 sq m AC Ledge

Block 18
#06-64



N
Key plan is not drawn to scale

0 1 3 5M
* Mirror Image ^ High Ceiling



N
Key plan is not drawn to scale

✦
Type CS5(p)

103 sq m / 1109 sq ft
Inclusive of 13 sq m PES
& 6 sq m AC Ledge

Block 6
#01-20

✦
Type CS5

103 sq m / 1109 sq ft
Inclusive of 13 sq m Balcony
& 6 sq m AC Ledge

Block 6
#02-20 to #10-20

0 1 3 5M
* Mirror Image ^ High Ceiling

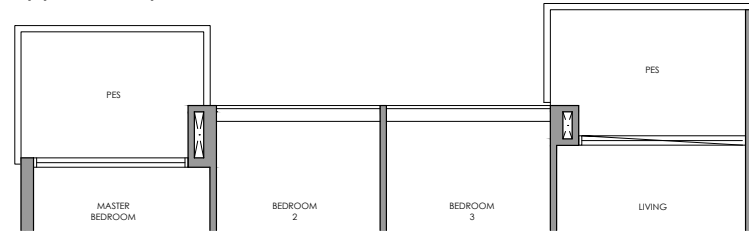
All plans are subject to change as may be required or approved by the relevant authorities. All floor areas are approximate measurements only and are subject to final survey. The balcony shall not be enclosed except with the approved balcony screen. For an illustration of the approved balcony screen, please refer to the diagram annexed hereto as "Annexure 1"

All plans are subject to change as may be required or approved by the relevant authorities. All floor areas are approximate measurements only and are subject to final survey. The balcony shall not be enclosed except with the approved balcony screen. For an illustration of the approved balcony screen, please refer to the diagram annexed hereto as "Annexure 1"

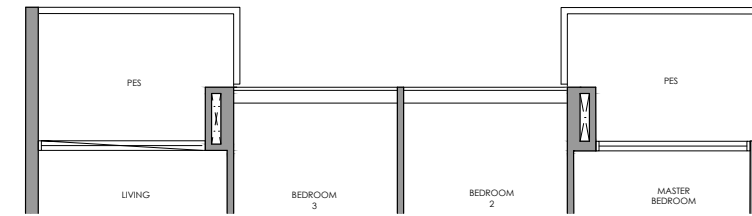
3-Bedroom + Study

3-Bedroom + Study

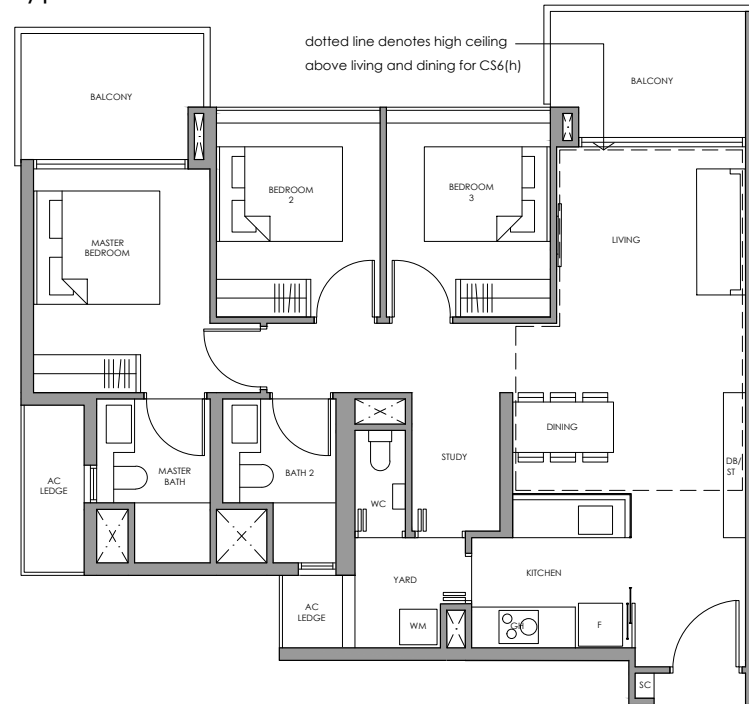
Type CS6(p)



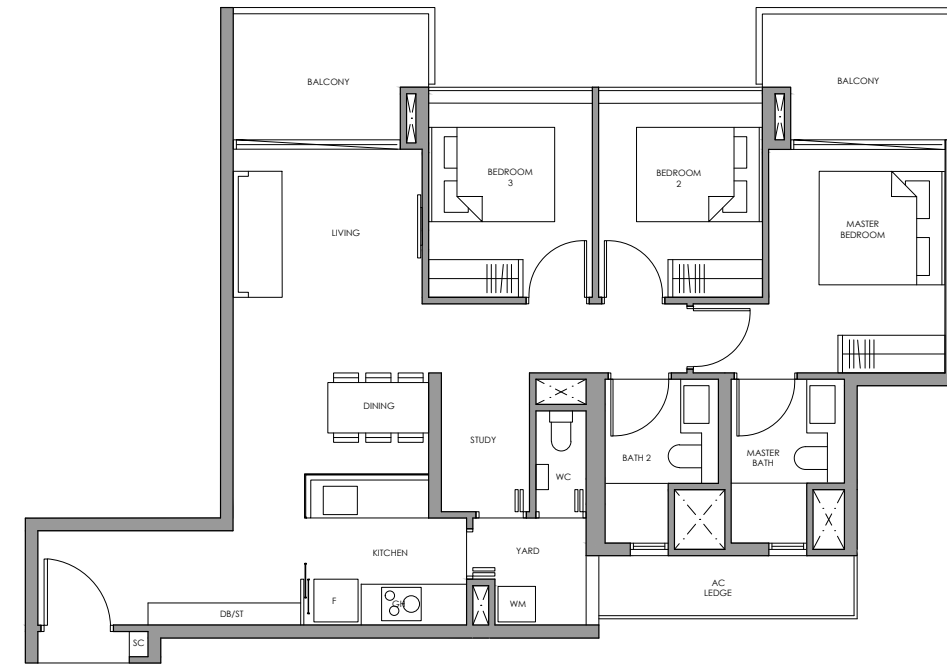
Type CS7(p)



Type CS6
Type CS6(h)



Type CS7



Fridge
Gas Hob
Shoe Cabinet
Washer cum Dryer
Distribution Board / Store

F
GH
SC
WM
DB/ST

Fridge
Gas Hob
Shoe Cabinet
Washer cum Dryer
Distribution Board / Store

F
GH
SC
WM
DB/ST

Type CS6(p)

103 sq m / 1109 sq ft
Inclusive of 13 sq m PES
& 5 sq m AC Ledge

Block 2
#01-06

Type CS6

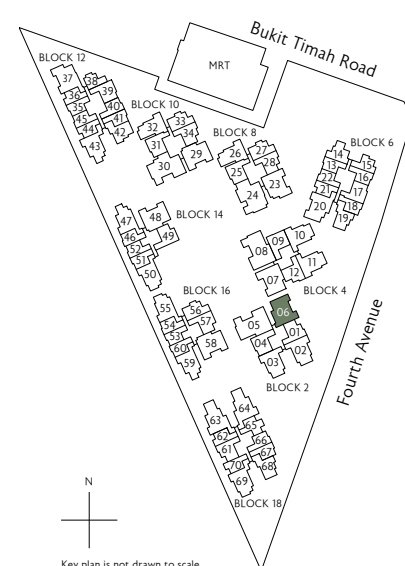
103 sq m / 1109 sq ft
Inclusive of 13 sq m Balcony
& 5 sq m AC Ledge

Block 2
#02-06 to #05-06

Type CS6(h)

103 sq m / 1109 sq ft
Inclusive of 13 sq m Balcony
& 5 sq m AC Ledge

Block 2
#06-06



N
Key plan is not drawn to scale

0 1 3 5M
* Mirror Image ^ High Ceiling

Type CS7(p)

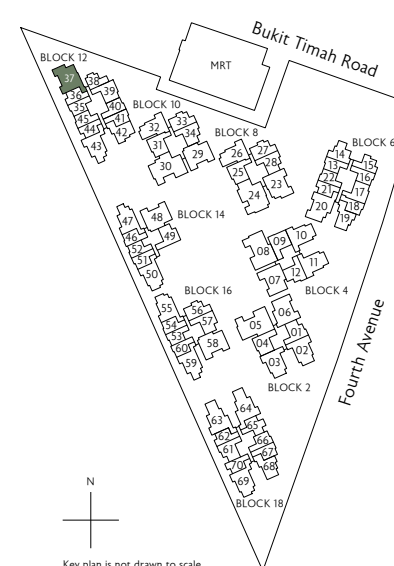
104 sq m / 1119 sq ft
Inclusive of 13 sq m PES
& 5 sq m AC Ledge

Block 12
#01-37

Type CS7

104 sq m / 1119 sq ft
Inclusive of 13 sq m Balcony
& 5 sq m AC Ledge

Block 12
#02-37 to #10-37



N
Key plan is not drawn to scale

0 1 3 5M
* Mirror Image ^ High Ceiling

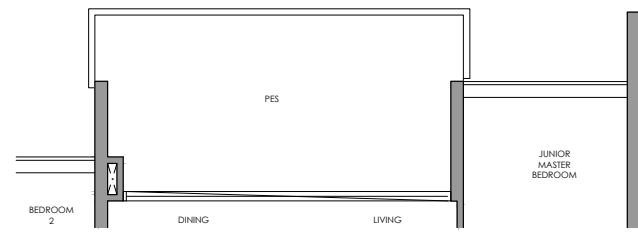
All plans are subject to change as may be required or approved by the relevant authorities. All floor areas are approximate measurements only and are subject to final survey. The balcony shall not be enclosed except with the approved balcony screen. For an illustration of the approved balcony screen, please refer to the diagram annexed hereto as "Annexure 1"

All plans are subject to change as may be required or approved by the relevant authorities. All floor areas are approximate measurements only and are subject to final survey. The balcony shall not be enclosed except with the approved balcony screen. For an illustration of the approved balcony screen, please refer to the diagram annexed hereto as "Annexure 1"

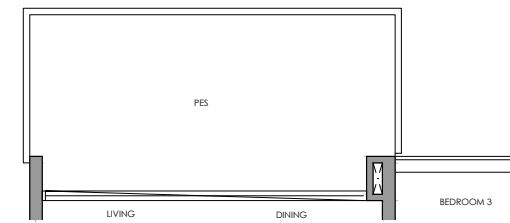
4-Bedroom + Study

4-Bedroom + Study

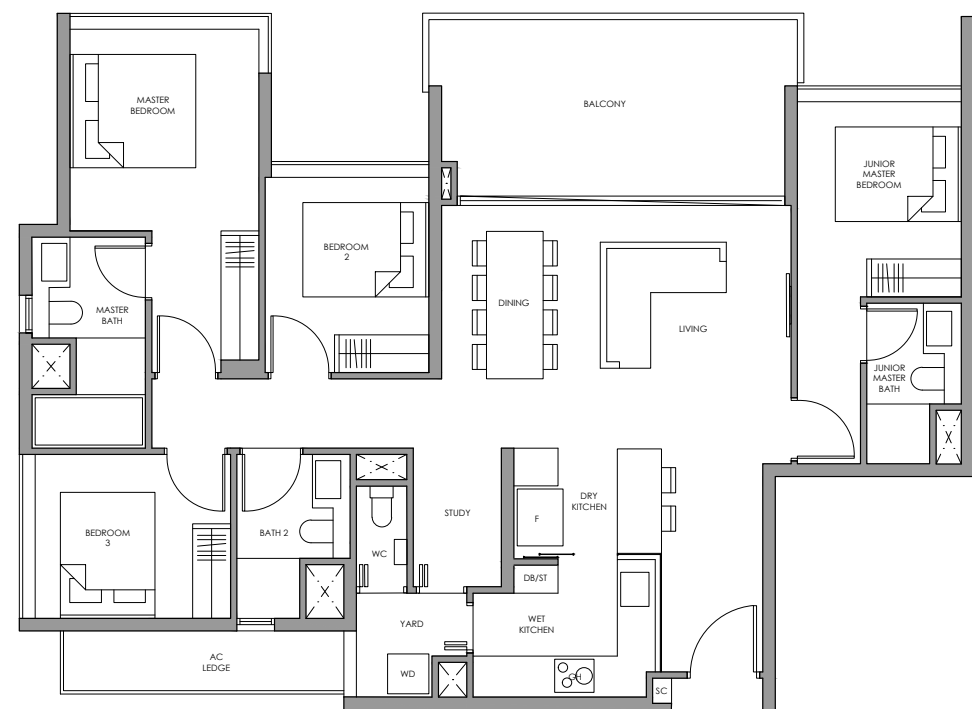
Type DS1(p)



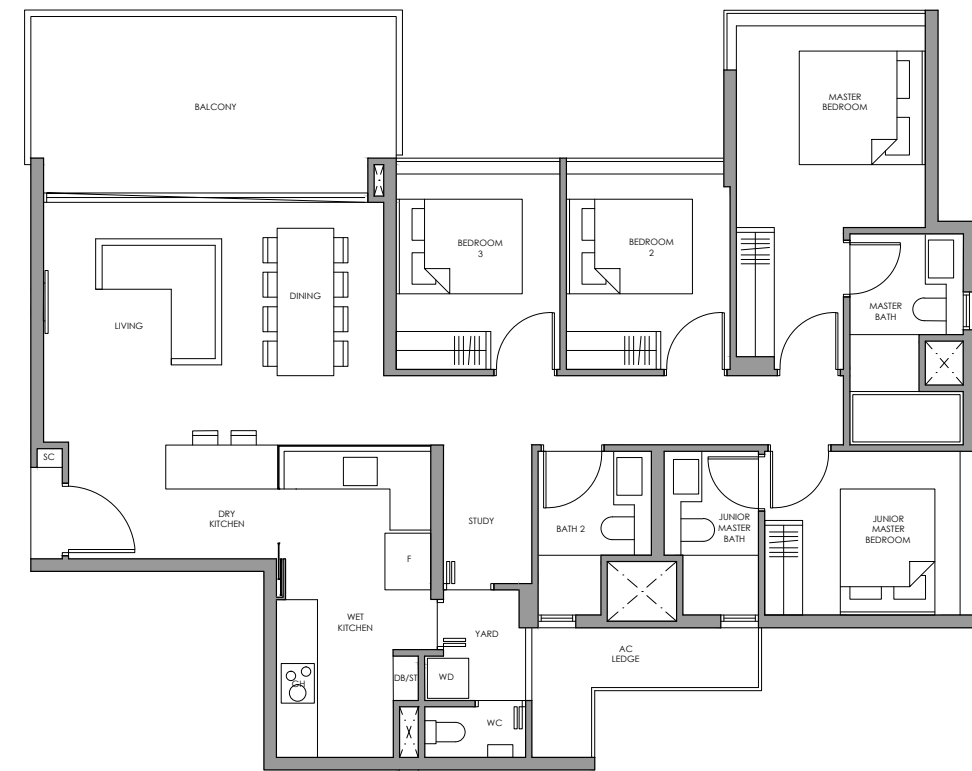
Type DS2(p)



Type DS1



Type DS2



Fridge F
Gas Hob GH
Shoe Cabinet SC
Washer and Dryer WD
Distribution Board / Store DB/ST

Fridge F
Gas Hob GH
Shoe Cabinet SC
Washer and Dryer WD
Distribution Board / Store DB/ST

✦
Type DS1(p)

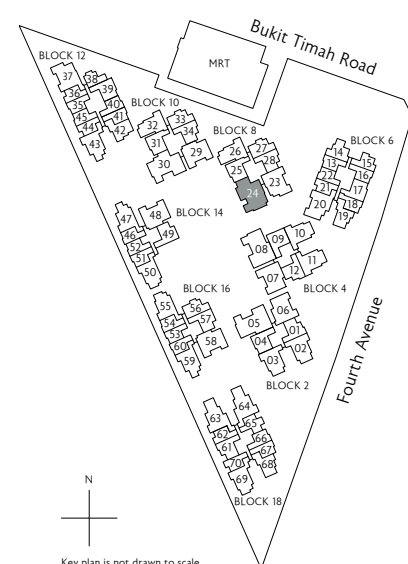
137 sq m / 1475 sq ft
Inclusive of 17 sq m PES
& 5 sq m AC Ledge

Block 8
#01-24

✦
Type DS1

137 sq m / 1475 sq ft
Inclusive of 17 sq m Balcony
& 5 sq m AC Ledge

Block 8
#02-24 to #06-24



N
Key plan is not drawn to scale

0 1 3 5M
* Mirror Image ^ High Ceiling

✦
Type DS2(p)

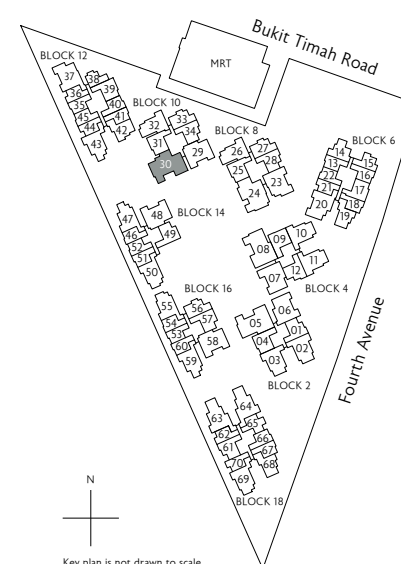
139 sq m / 1496 sq ft
Inclusive of 17 sq m PES
& 5 sq m AC Ledge

Block 10
#01-30

✦
Type DS2

139 sq m / 1496 sq ft
Inclusive of 17 sq m Balcony
& 5 sq m AC Ledge

Block 10
#02-30 to #06-30



N
Key plan is not drawn to scale

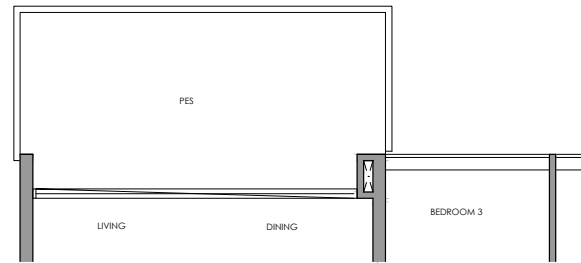
0 1 3 5M
* Mirror Image ^ High Ceiling

All plans are subject to change as may be required or approved by the relevant authorities. All floor areas are approximate measurements only and are subject to final survey. The balcony shall not be enclosed except with the approved balcony screen. For an illustration of the approved balcony screen, please refer to the diagram annexed hereto as "Annexure 1"

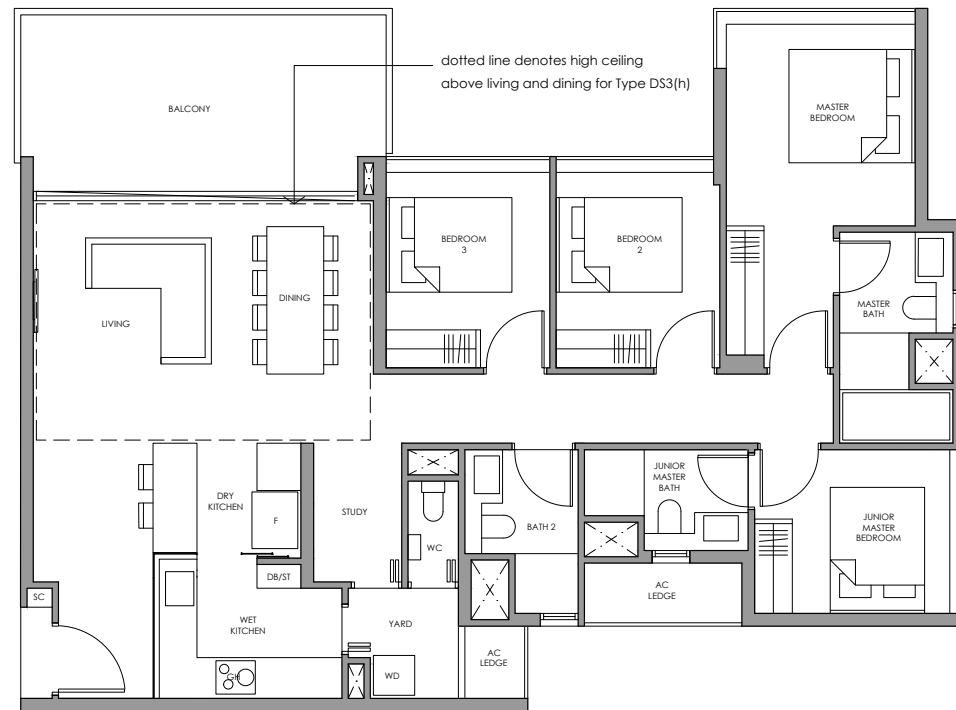
All plans are subject to change as may be required or approved by the relevant authorities. All floor areas are approximate measurements only and are subject to final survey. The balcony shall not be enclosed except with the approved balcony screen. For an illustration of the approved balcony screen, please refer to the diagram annexed hereto as "Annexure 1"

4-Bedroom + Study

Type DS3(p)

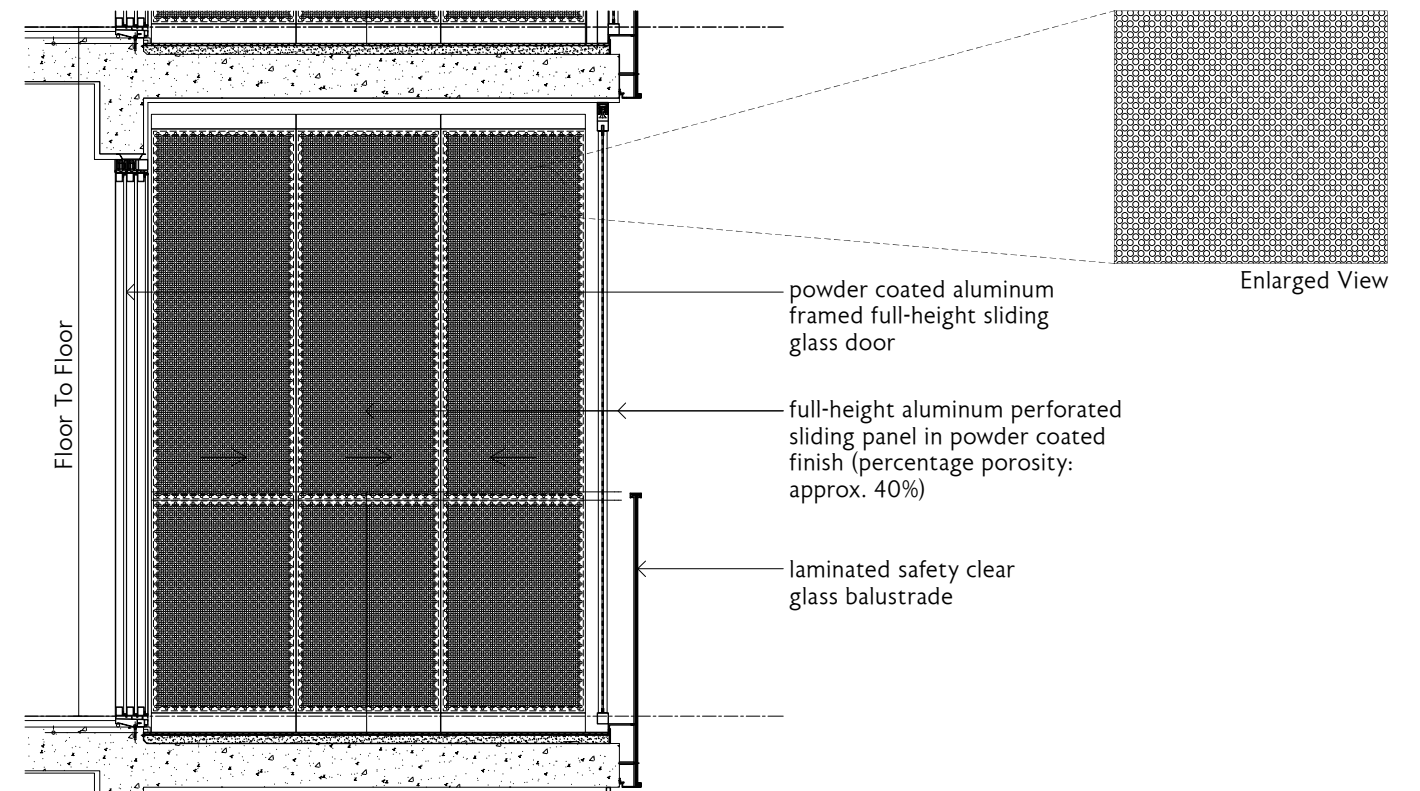


Type DS3
Type DS3(h)



- Fridge
- Gas Hob
- Shoe Cabinet
- Washer and Dryer
- Distribution Board / Store

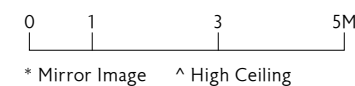
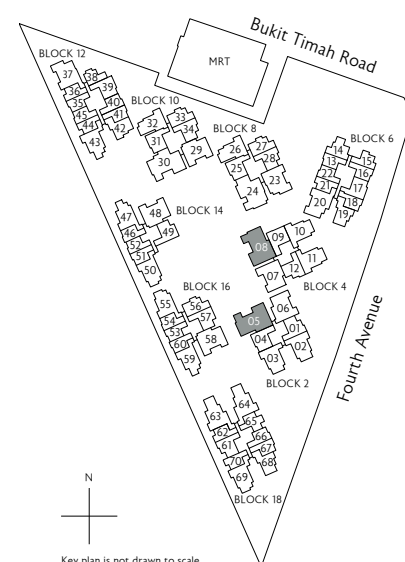
- F
- GH
- SC
- WD
- DB/ST



Approved Balcony Screen

- Note:
- (i) The balcony shall not be enclosed unless with the approved balcony screen (as shown above)
 - (ii) The installation and cost of the screen shall be borne by the Purchaser

Type DS3(p)	Type DS3	Type DS3(h)
138 sq m / 1485 sq ft Inclusive of 17 sq m PES & 4 sq m AC Ledge	138 sq m / 1485 sq ft Inclusive of 17 sq m Balcony & 4 sq m AC Ledge	138 sq m / 1485 sq ft Inclusive of 17 sq m Balcony & 4 sq m AC Ledge
Block 2 #01-05 *	Block 2 #02-05 to #05-05 *	Block 2 #06-05 *
Block 4 #01-08	Block 4 #02-08 to #05-08	Block 4 #06-08



All plans are subject to change as may be required or approved by the relevant authorities. All floor areas are approximate measurements only and are subject to final survey. The balcony shall not be enclosed except with the approved balcony screen. For an illustration of the approved balcony screen, please refer to the diagram annexed hereto as "Annexure 1"



Artist's Impression

THE BUKIT TIMAH
COLLECTION

FOURTH  AVENUE
RESIDENCES

Developer

Valleypoint Investments Pte. Ltd.
(A wholly owned subsidiary of Allgreen Properties Limited)
(UEN:200813977K)

Developer's Licence No.

C1262

Tenure of Land

99 years commencing from 07 March 2018

Legal Description

Lot 07301P MK 04 at Fourth Avenue

Encumbrances on the Land

Mortgage in favour of Oversea-Chinese Banking Corporation Limited

Expected Date of Vacant Possession

08 December 2022

Expected Date of Legal Completion

08 December 2025



ALLGREEN PROPERTIES LIMITED

While all reasonable care has been taken in preparing this brochure, the vendor and its agent(s) shall not be held responsible for any inaccuracies or omissions. All statements are believed to be correct but shall not be regarded as statements or representations of fact. Visual representations including models, drawings, illustrations, photographs, art renderings and graphic representations portray artistic impressions only and are not to be taken as representations of fact. Floor areas and other measurements are approximate only and are subject to final survey. All information, plans, specifications and visual representation are current at the time of print and are subject to changes as may be required or approved by the vendor and/or the relevant authorities. The Sale and Purchase Agreement shall form the entire agreement between the vendor and the purchaser and shall in no way be modified by any statements or representations (whether contained in this brochure or given by the vendor's agent(s) or otherwise). The vendor reserves the right to modify any part or parts of the building, housing project, development and/or any unit prior to completion as directed or approved by the relevant authorities.